



शहीद राजगुरु कॉलेज ऑफ एप्लाइड साइंसेस फॉर वुमैन SHAHEED RAJGURU COLLEGE OF APPLIED SCIENCES FOR WOMEN

(दिल्ली विश्वविद्यालय)

वसुंधरा एनक्लेव (चिल्ला स्पोर्ट्स कॉम्प्लेक्स के पास)
दिल्ली-110096

दूरभाष : 22623503, 22623505

दूरभाष/फैक्स : 22623504

(UNIVERSITY OF DELHI)

Vasundhara Enclave (Adjoining Chilla Sports Complex)
Delhi-110096

Phone(s) : 22623503, 22623505

Phone/Fax : 22623504

संदर्भ सं./Ref. No. SRCASW/.....

दिनांक/Date.....

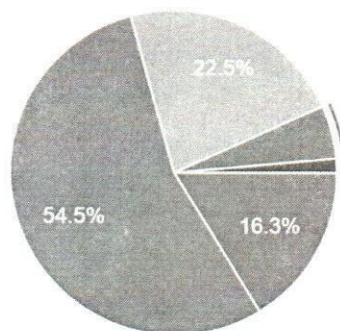
Shaheed Rajguru College of Applied Sciences for Women

Student Satisfaction Survey 2019 Analysis

1.

The quality of teaching in your college is very good

565 responses

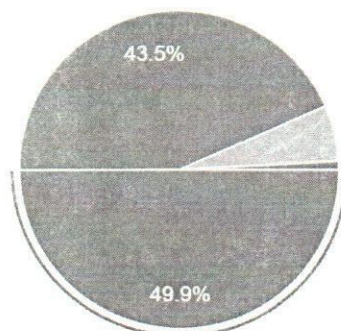


● Strongly Agree
● Agree
● Neutral
● Disagree
● Strongly Disagree

2.

Course curriculum covered in the class

565 responses



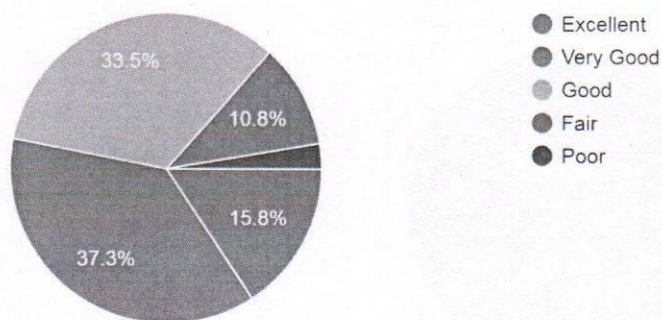
● 90 - 100%
● 70 - 89%
● 40 - 69%
● Below 40%

प्रचार्य/Principal
शहीद राजगुरु कॉलेज ऑफ
एप्लाइड साइंसेस फॉर वुमैन
SHAHEED RAJGURU COLLEGE OF
APPLIED SCIENCES FOR WOMEN
दिल्ली विश्वविद्यालय/University of Delhi
वसुंधरा एनक्लेव, नई दिल्ली-110096

3,

The teacher's approach to teaching can be best described as

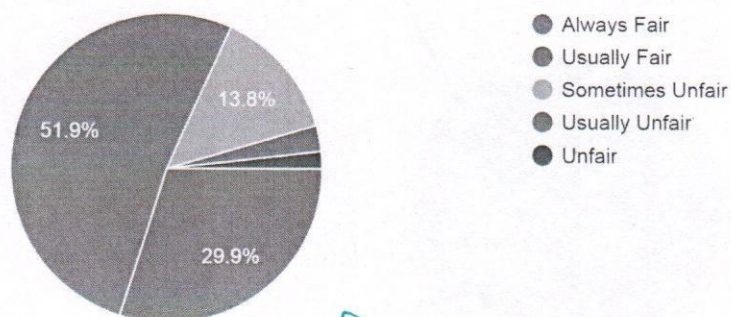
565 responses



4.

Continuous evaluation process by the teachers

565 responses



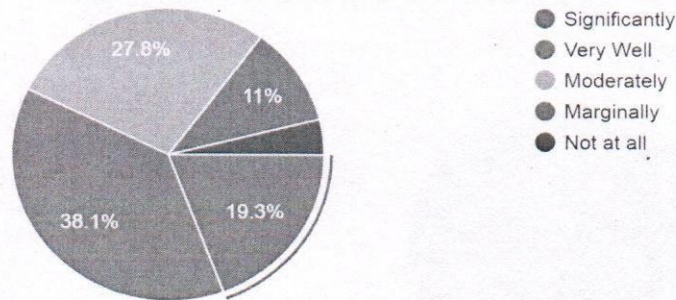
प्राचार्य/Principal

शहीद राजगुरु कॉलेज ऑफ
एप्लाइड साइंसेस फॉर वुमैन
SHAHEED RAJBURU COLLEGE OF
APPLIED SCIENCES FOR WOMEN
(दिल्ली विश्वविद्यालय/University of Delhi)
वसुंधरा एन्क्लेव, नई दिल्ली-110096
vasundhara Enclave New Delhi-110096

5

Activities like Conferences/seminars/workshops/student exchange/educational visits etc. are held frequently which are useful for me

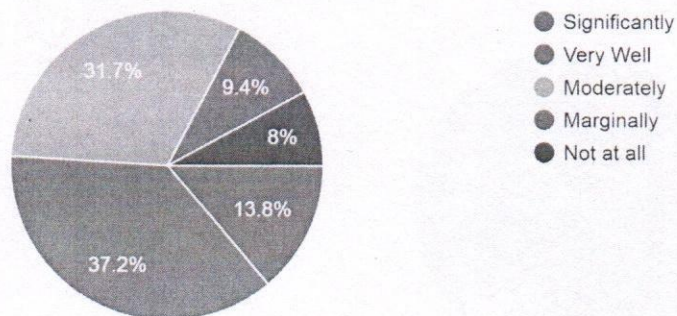
565 responses



6.

The mentoring process of the college facilitates me in conceptual, social and emotional growth

565 responses

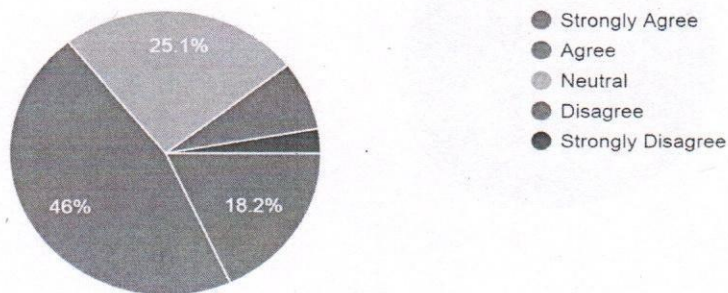


प्राचार्य/Principal
शहीद राजगुरु कॉलेज ऑफ
एप्लाइड साइंसेस फॉर वुमैन
SHAHEED RAJGURU COLLEGE OF
APPLIED SCIENCES FOR WOMEN
दिल्ली विश्वविद्यालय/University of Delhi
वरसंधरा एनक्लेव, नई दिल्ली-110094
Vasundhara Enclave New Delhi-110094

7

The college provides a platform to explore, learn and grow in various fields

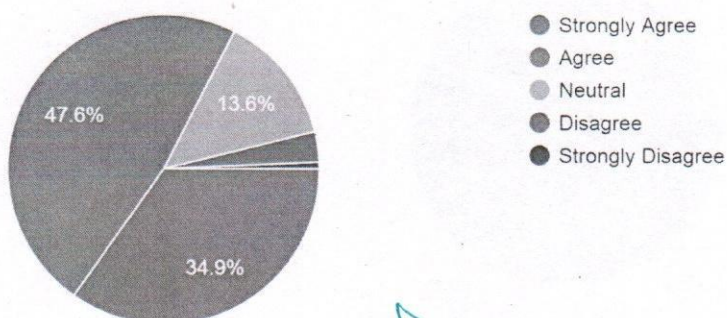
565 responses



8

The classrooms are clean and the environment is conducive to learning

565 responses



[Signature]

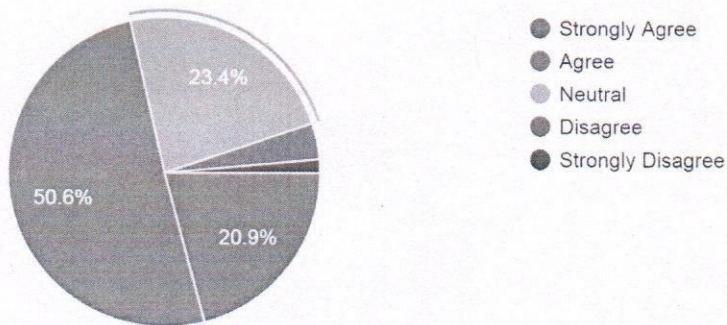
प्राचार्य/Principal

शहीद राजगुरु कॉलेज ऑफ
एप्लाइड साइंसेस फॉर वूमन
SHAHEED RAJGURU COLLEGE OF
APPLIED SCIENCES FOR WOMEN
(दिल्ली विश्वविद्यालय/University of Delhi)
वसुधरा एनक्लेव, नई दिल्ली-110096
vasudhara Enclave New Delhi-110096

9.

My awareness towards society, environment and country has been enhanced

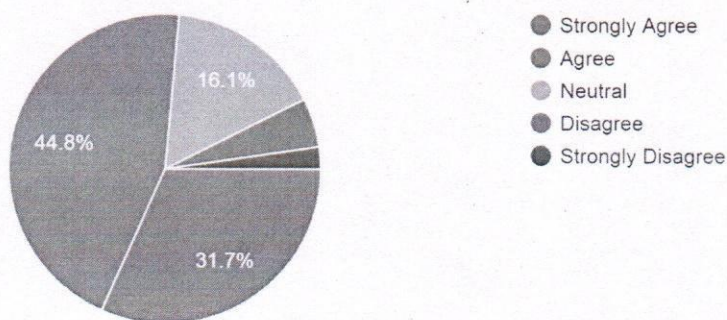
565 responses



10.

I have become a better person and I am proud of myself

565 responses



प्राचार्य/Principal
शहीद राजगुरु कॉलेज ऑफ
एप्लाइड साइंसेस फॉर वुमैन
SHAHEED RAJGURU COLLEGE OF
APPLIED SCIENCES FOR WOMEN
(दिल्ली विश्वविद्यालय/University of Delhi)
वसुंधरा एनक्लेव, नई दिल्ली-110096
Vasundhara Enclave New Delhi-110096



शहीद राजगुरु कॉलेज ऑफ एप्लाइड साइंसेस फॉर वुमैन
SHAHEED RAJGURU COLLEGE OF APPLIED SCIENCES FOR WOMEN
(दिल्ली विश्वविद्यालय)
वसुंधरा एनक्लेव (चिल्ला स्पोर्ट्स कॉम्प्लेक्स के पास)
दिल्ली-110096
दूरभाष : 22623503, 22623505
दूरभाष/फैक्स : 22623504

(UNIVERSITY OF DELHI)
Vasundhara Enclave (Adjoining Chilla Sports Complex)
Delhi-110096
Phone(s) : 22623503, 22623505
Phone/Fax : 22623504

संदर्भ सं./Ref. No. SRCASW/.....

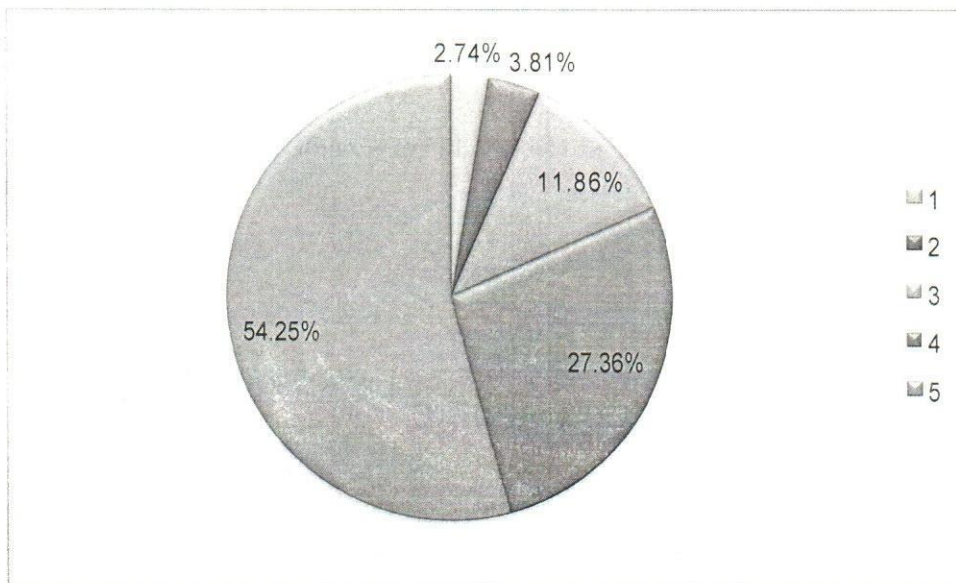
दिनांक/Date.....

Teacher's feedback Analysis 2018 – 19

Ranking from 1 to 5 is as follows –

- 1 – Lots of improvement needed
- 2 – Not good
- 3 – Good
- 4 – Very Good
- 5 – Excellent

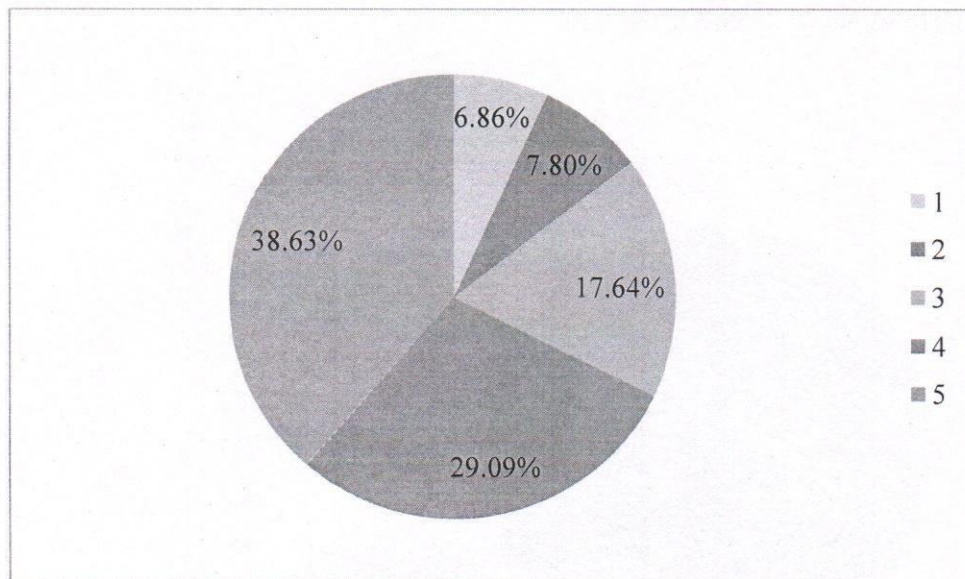
1. The teacher is regular in taking lectures and practicals?
(4463 responses)



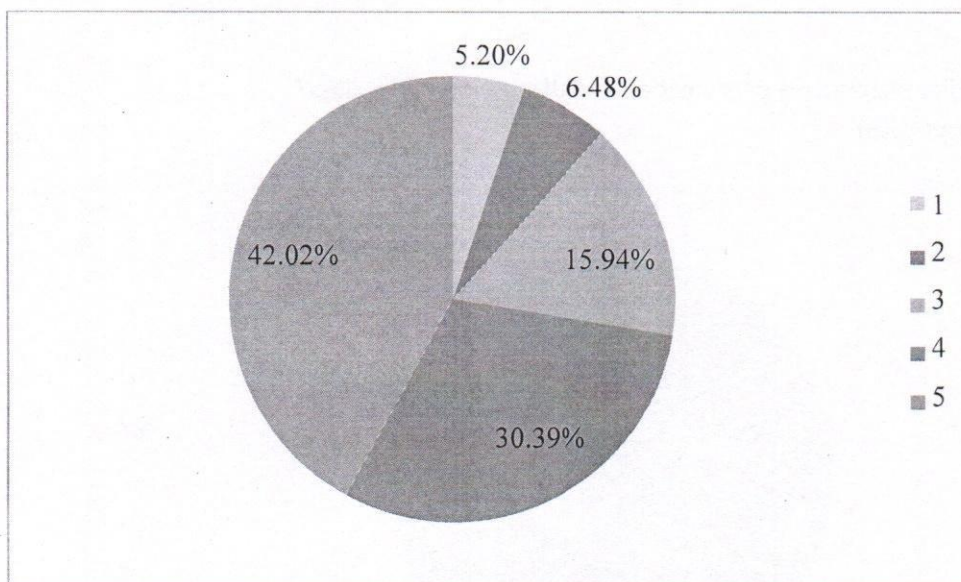
Principal

शहीद राजगुरु कॉलेज ऑफ
एप्लाइड साइंसेस फॉर वुमैन
SHAHEED RAJGURU COLLEGE OF
APPLIED SCIENCES FOR WOMEN
(UNIVERSITY OF DELHI)
वसुंधरा एनक्लेव, चिल्ला स्पोर्ट्स कॉम्प्लेक्स के पास
दिल्ली-110096
दूरभाष : 22623503, 22623505
दूरभाष/फैक्स : 22623504

2. The teacher is able to make the concepts understandable for the class?
(4463 responses)



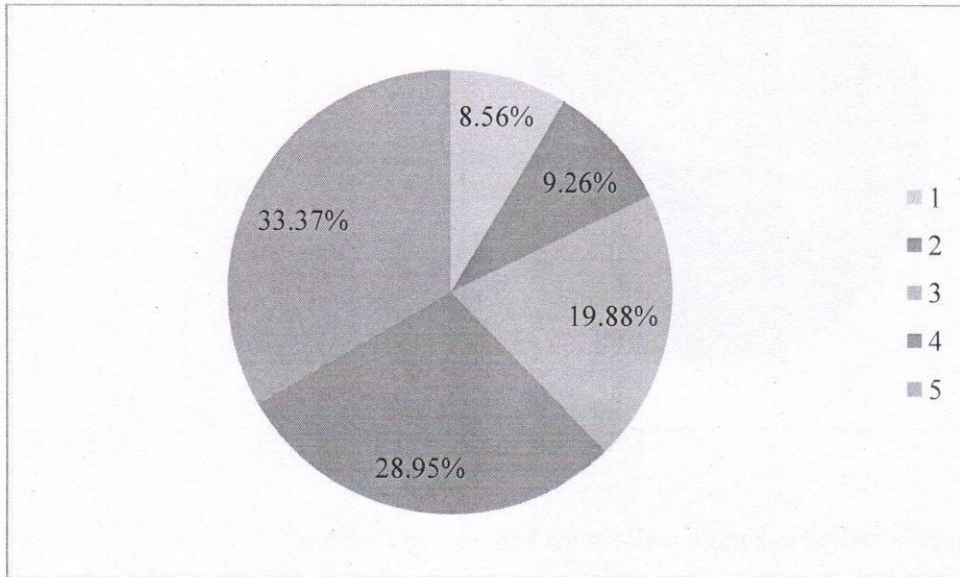
3. The teacher is skilled to handle indiscipline behavior in the class?
(4463 responses)



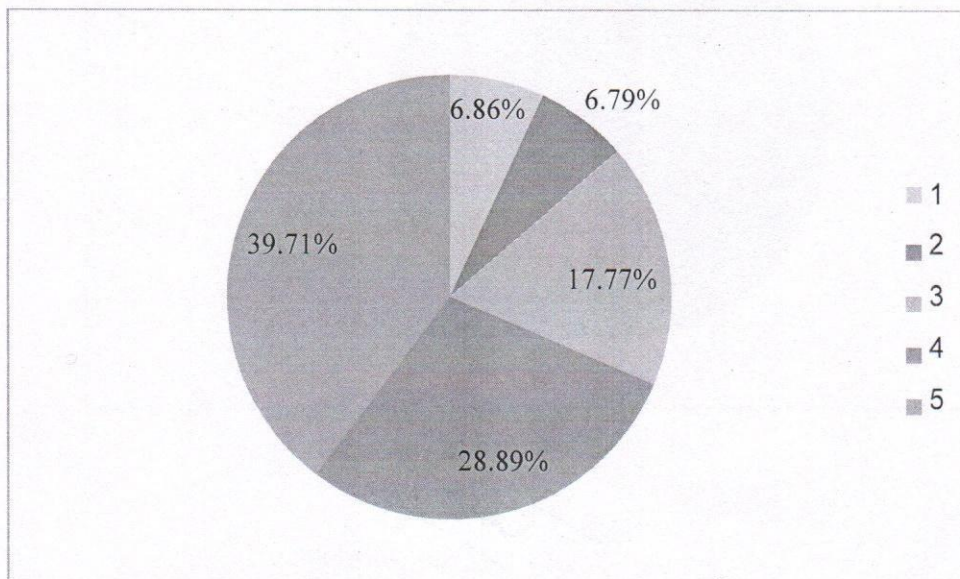
प्राचार्य/Principal

शाहीद राजगुरु कॉलेज ऑफ
एप्लाइड साइंसेस फॉर वूमैन
SHAHEED RAJGURU COLLEGE OF
APPLIED SCIENCES FOR WOMEN
(दिल्ली विश्वविद्यालय/University of Delhi)
बसुंधरा एनक्लेव, नई दिल्ली-110096
Basundhara Enclave New Delhi-110096

4. The teacher is able to stimulate interest in the class?
(4463 responses)

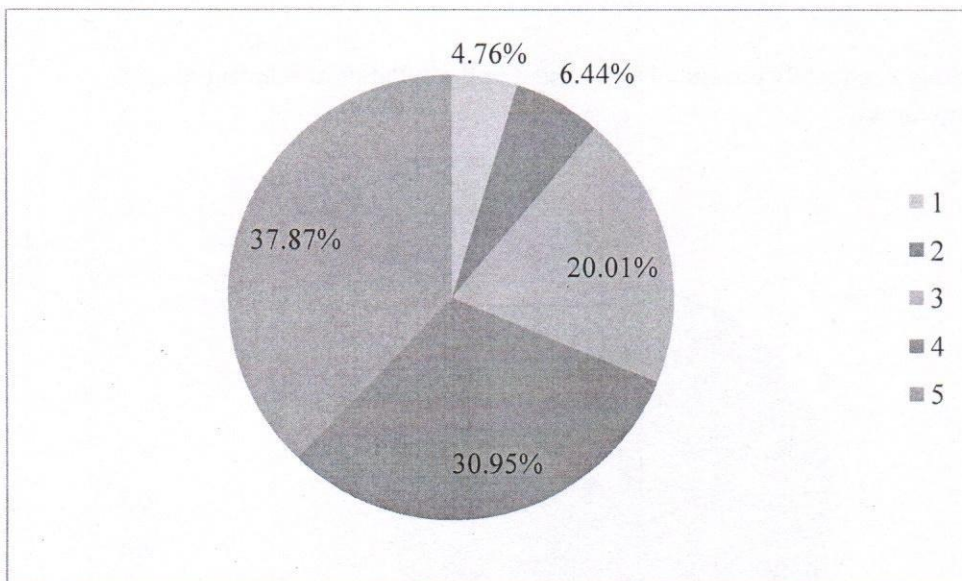


5. The teacher encourages participation and discussion in the class?
(4463 responses)

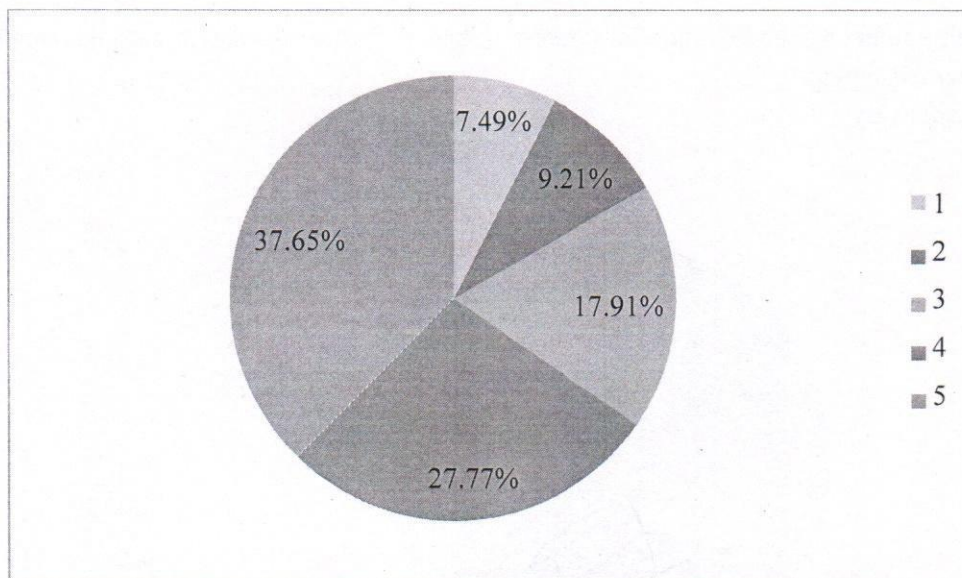


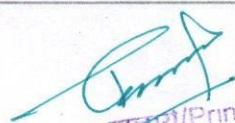
प्राचार्य/Principal
गहीद राजगुरु कॉलेज ऑफ
एप्लाइड साइंसेस फॉर वुमैन
HAHEED RAJGURU COLLEGE OF
APPLIED SCIENCES FOR WOMEN
दिल्ली विश्वविद्यालय/University of Delhi
सुंधरा एनक्लेव, नई दिल्ली-110096
asundhara Enclave New Delhi-110096

6. The teacher conducts tests or assignments or quizzes or seminars or presentations in the class?
(4463 responses)

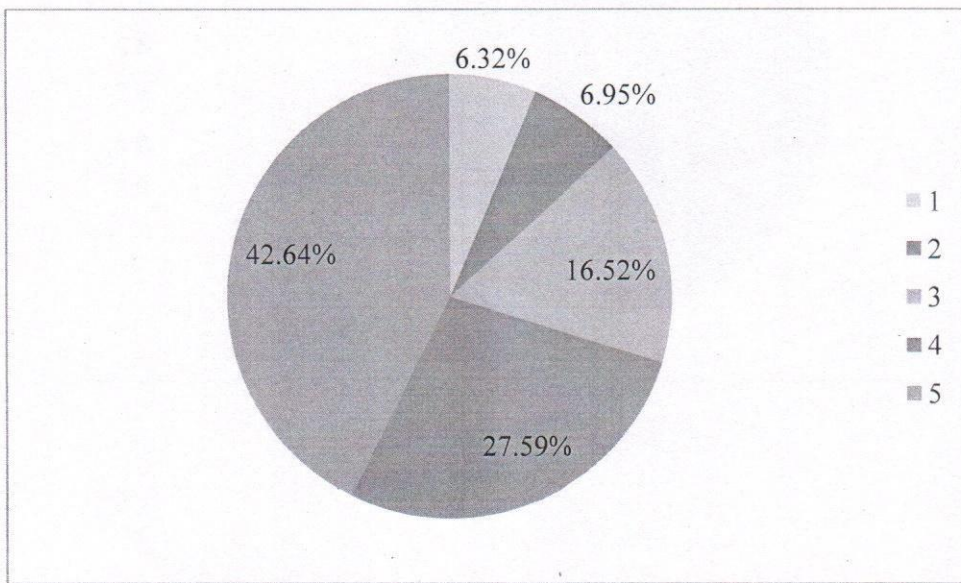


7. The teacher shares and discusses the answers of class tests after the conduct of tests?
(4463 responses)

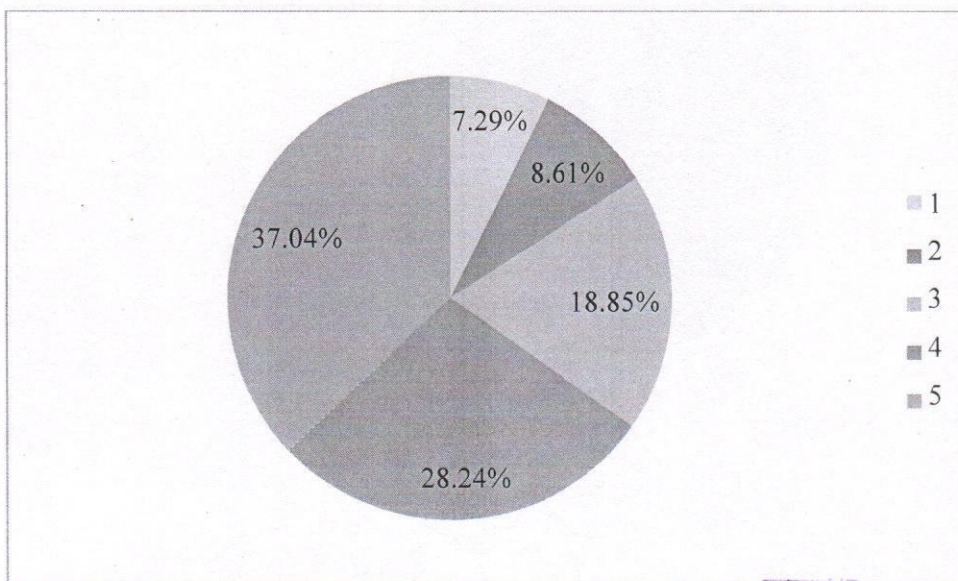



Principal
शहीद राजगुरु कॉलेज ऑफ
एप्लाइड साइंसेस फॉर वुमैन
SHAHEED RAJGURU COLLEGE OF
APPLIED SCIENCES FOR WOMEN
(दिल्ली विश्वविद्यालय/University of Delhi)
वसुंधरा एनक्लेव, नई दिल्ली-110096
vasundhara Enclave New Delhi-110096

8. The teaching adequately covers all topic listed in the syllabus at relevant speed?
(4463 responses)



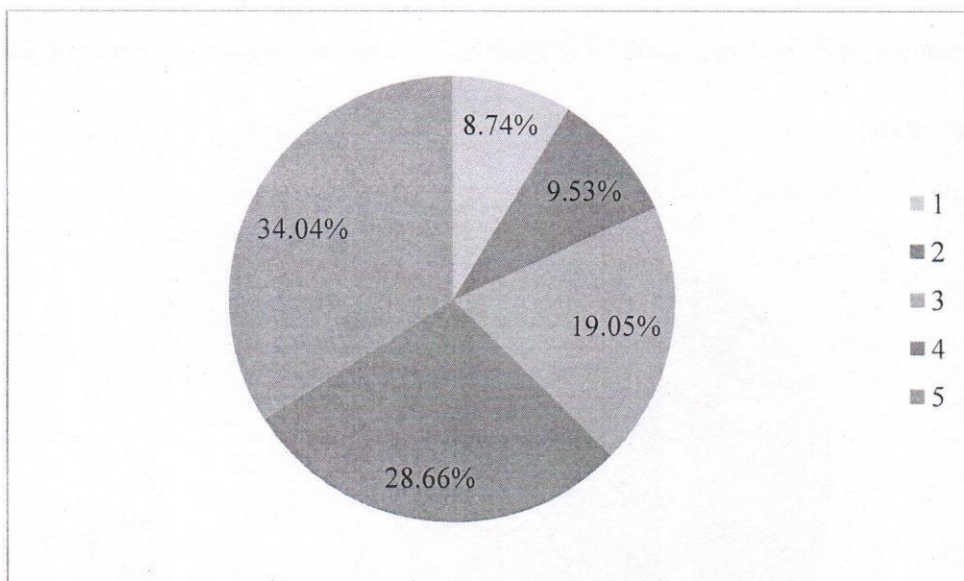
9. The teacher refers and encourages the students to update themselves about latest developments in the concerned subject?
(4463 responses)



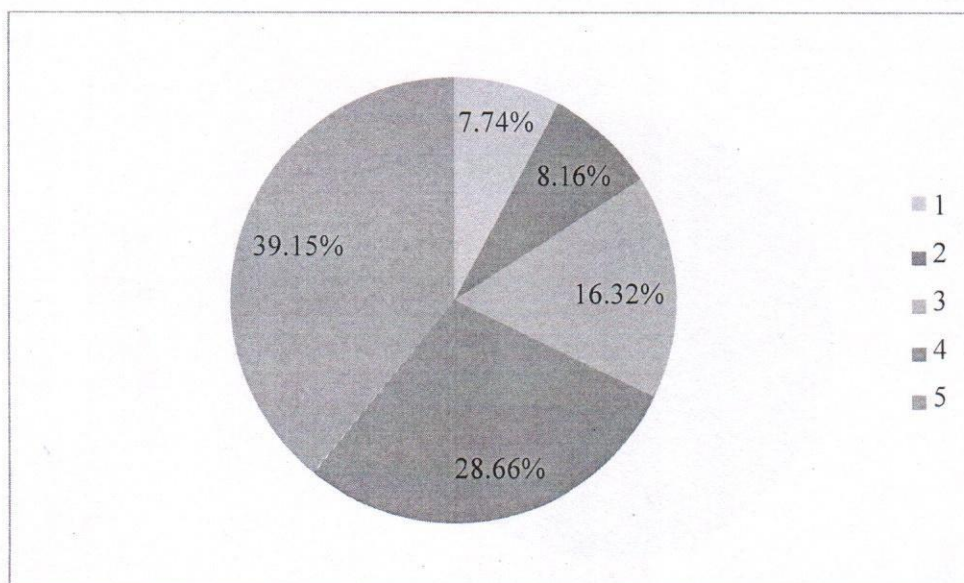
Principal/Principala

महोदय राजगुरु कॉलेज ऑफ
एप्लाइड साइंसेस फॉर वूमन
MAHEED RAIGURU COLLEGE OF
APPLIED SCIENCES FOR WOMEN
देहली विश्वविद्यालय/University of Delhi
सुंधरा एनक्लेव, नई दिल्ली-110006
Sundhara Enclave, New Delhi-110006

10. The teacher helps and mentors students towards overall personality development?
(4463 responses)



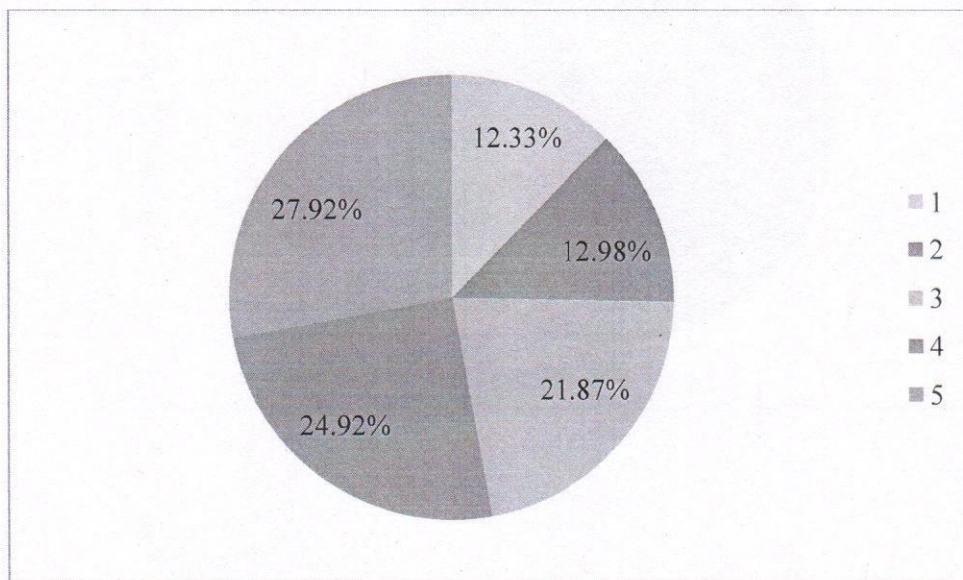
11. The teacher ensures that the class has understood the topic taught by him/her?
(4463 responses)



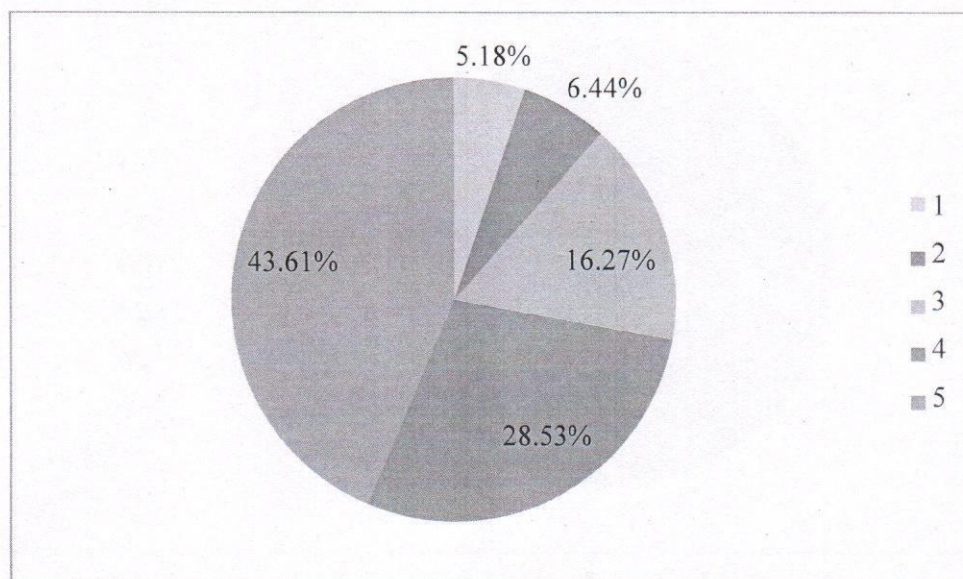
[Handwritten Signature]

प्राचार्य/Principal
शहीद राजगुरु कॉलेज ऑफ
एप्लाइड साइंसेस फॉर वुमैन
SHAHEED RAJGURU COLLEGE OF
APPLIED SCIENCES FOR WOMEN
(दिल्ली विश्वविद्यालय/University of Delhi)
वसंतधरा एनक्लेव, नई दिल्ली-110096
Vasantdhar Enclave New Delhi-110096

12. Modern teaching aids such as projectors or models or videos or simulators are used by the teacher?
(4463 responses)

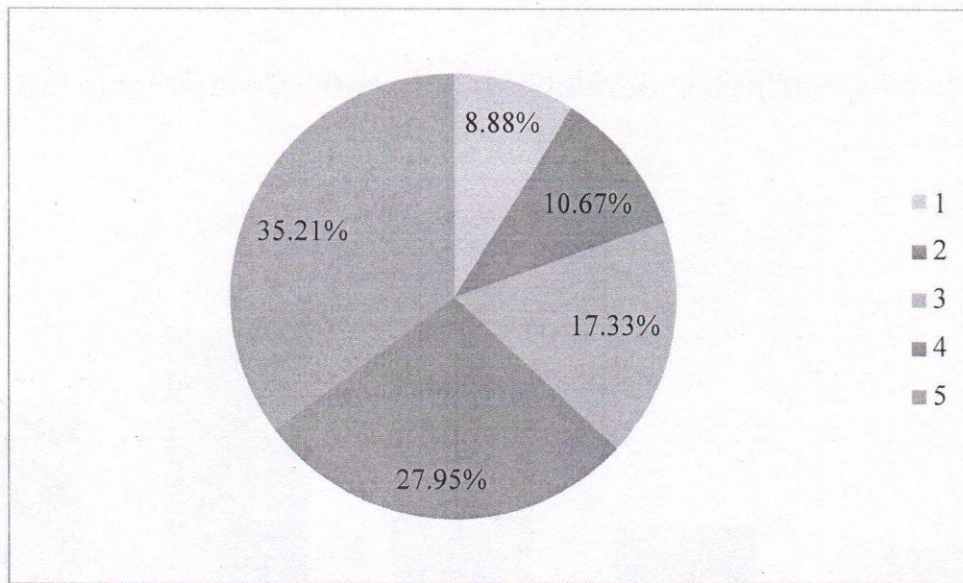


13. The teacher is available and accessible to the students?
(4463 responses)



प्राचार्य/Principal
शहीद राजगुरु कॉलेज ऑफ
एप्लाइड साइंसेस फॉर वुमैन
SHARIED RAJGURU COLLEGE OF
APPLIED SCIENCES FOR WOMEN
दिल्ली विश्वविद्यालय/University of Delhi
वसुंधरा एनक्लेव, नई दिल्ली-110096
Vasundhara Enclave New Delhi-110096

14. The teacher makes extra efforts beyond the specified curriculum for subject enrichment?
(4463 responses)

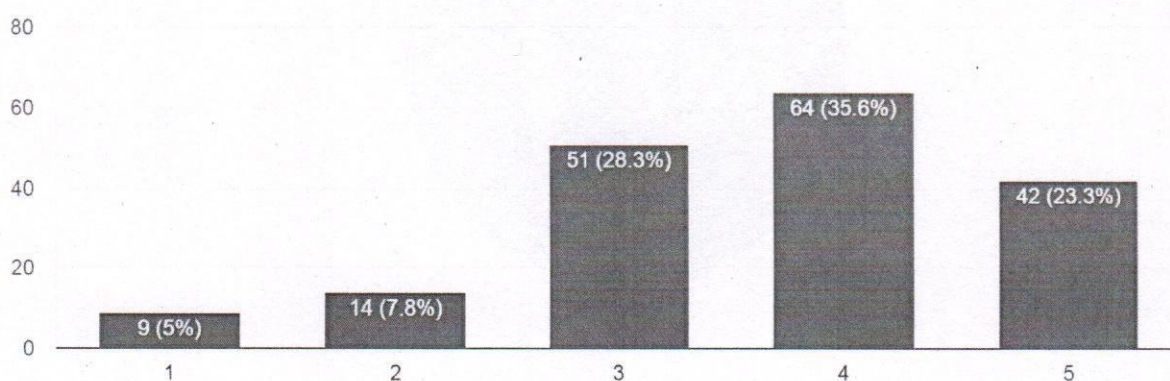


प्राचार्य/Principal
शहीद राजगुरु कॉलेज ऑफ
एप्लाइड साइंसेस फॉर वुमैन
SHAHEED RAJGURU COLLEGE OF
APPLIED SCIENCES FOR WOMEN
(दिल्ली विश्वविद्यालय/University of Delhi)
वसुंधरा एनक्लेव, नई दिल्ली-110096
Vasundhara Enclave New Delhi-110096

Parent Feedback 2019- Analysis

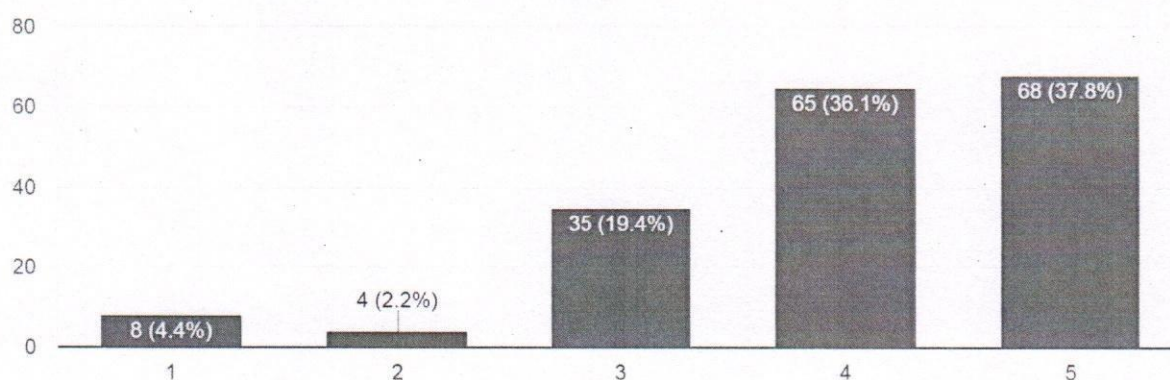
1. Has the college helped in development of academic interest in the student?


180 responses



2. Does the college offer good library facilities?

180 responses

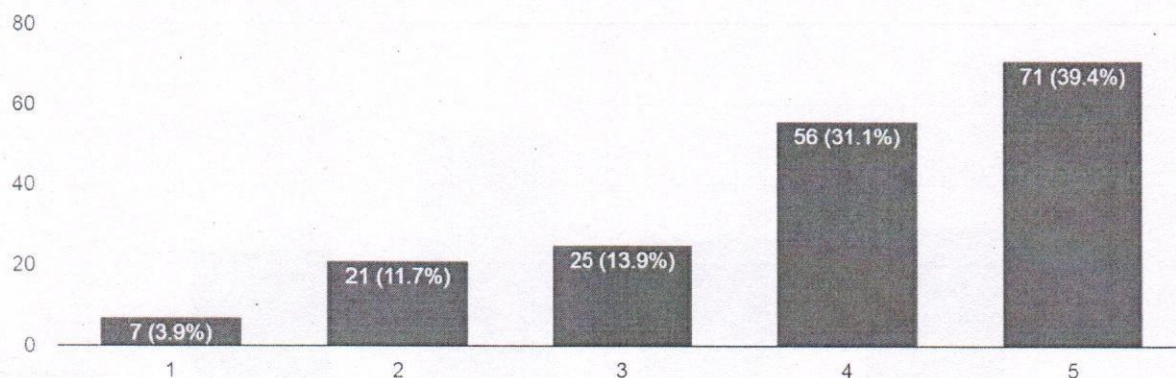



प्राचार्य/Principal
शहीद राजगुरु कॉलेज ऑफ
एप्लाइड साइंसेस फॉर वुमैन
SHAHEED RAJGURU COLLEGE OF
APPLIED SCIENCES FOR WOMEN
(दिल्ली विश्वविद्यालय/University of Delhi)
वसुंधरा एनक्लेव, नई दिल्ली-110096
vasundhara Enclave New Delhi-110096

Parent Feedback 2019- Analysis

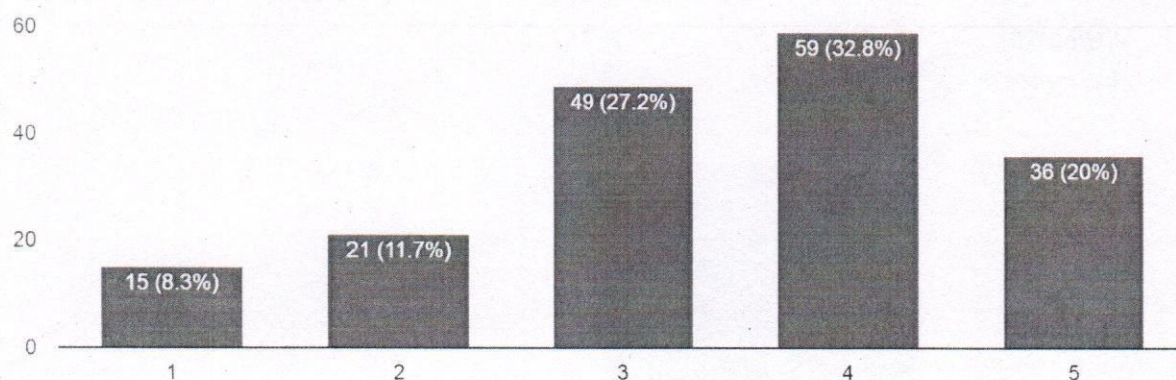
3. Does the college offer adequate extra-curricular activities (different societies like dance, music, dramatics, fashion, fine arts etc)?

180 responses



4. Are you satisfied with sport facilities available in the college?

180 responses

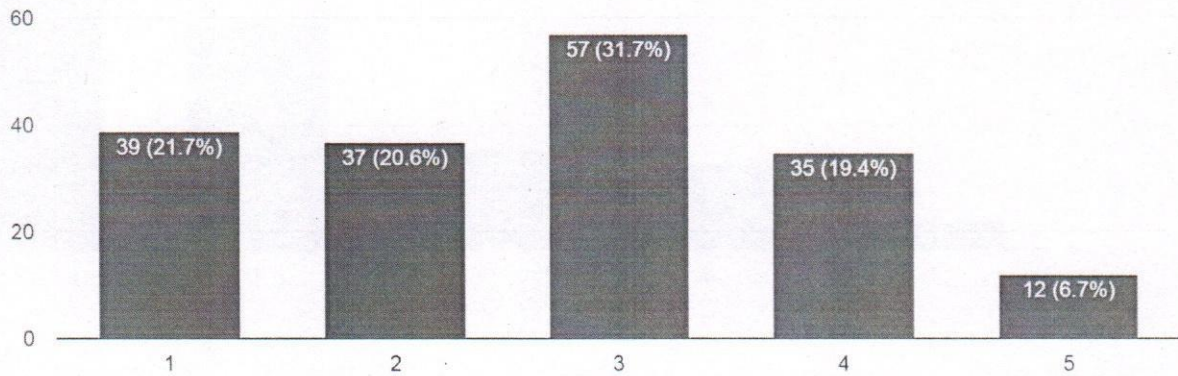


प्राचार्य/Principal
शहीद राजगुरु कॉलेज ऑफ
एप्लाइड साइंसेस फॉर वुमैन
SHAHEED RAJGURU COLLEGE OF
APPLIED SCIENCES FOR WOMEN
(दिल्ली विश्वविद्यालय/University of Delhi)
वसुंधरा एनक्लेव, नई दिल्ली-110096
'asundhara Enclave New Delhi-110096'

Parent Feedback 2019- Analysis

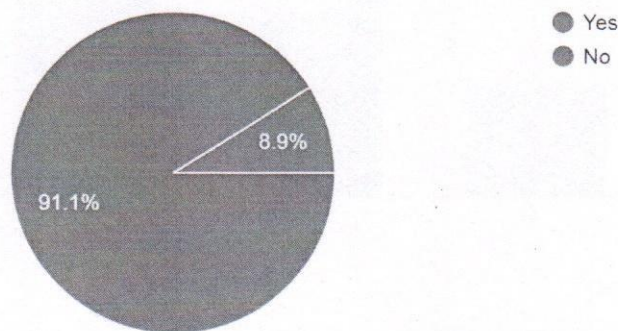
5. Are you satisfied with the medical facilities available in the college?

180 responses



6. Are you aware about the students attendance record available on college website?

180 responses



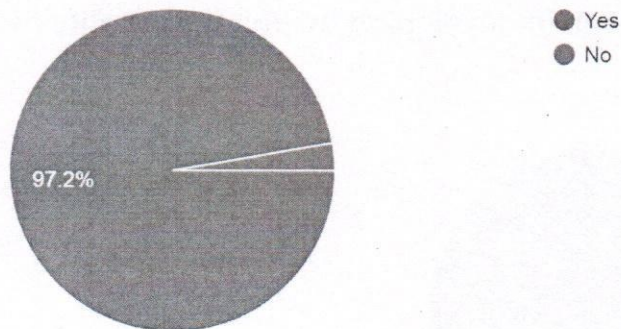
प्राचार्य/Principal

गहीद राजगुरु कॉलेज ऑफ
एप्लाइड साइंसेस फॉर वुमैन
SHAHEED RAJGURU COLLEGE OF
APPLIED SCIENCES FOR WOMEN
दिल्ली विश्वविद्यालय/University of Delhi
असुंधरा एनक्लेव, नई दिल्ली-110096
asundhara Enclave New Delhi-110096

Parent Feedback 2019- Analysis

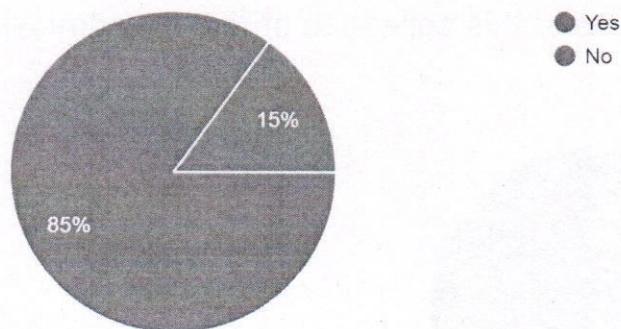
7. Are you satisfied with discipline in the college?

180 responses



8. Has the college helped in building moral values in your daughter?

180 responses

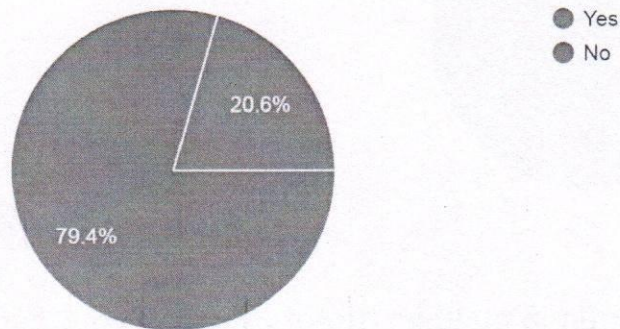


प्राचार्य/Principal
शहीद राजगुरु कॉलेज ऑफ
एप्लाइड साइंसेस फॉर वुमैन
SHAHEED RAJGURU COLLEGE OF
APPLIED SCIENCES FOR WOMEN
(दिल्ली विश्वविद्यालय/University of Delhi)
वासुंधरा एनक्लेव, नई दिल्ली-110096
Vasundhara Enclave New Delhi-110096

Parent Feedback 2019- Analysis

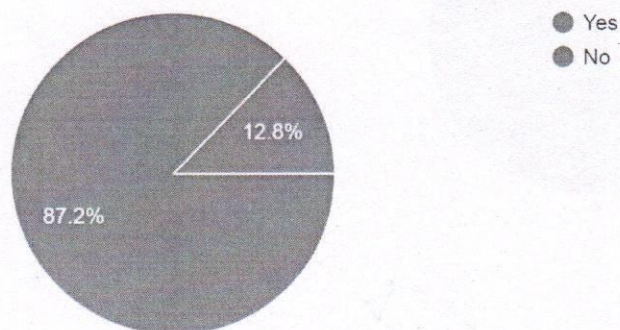
9. Has the college helped in developing overall personality of the student?

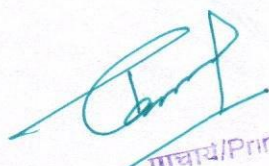
180 responses



10. Would you recommend this college to others for admissions?

180 responses

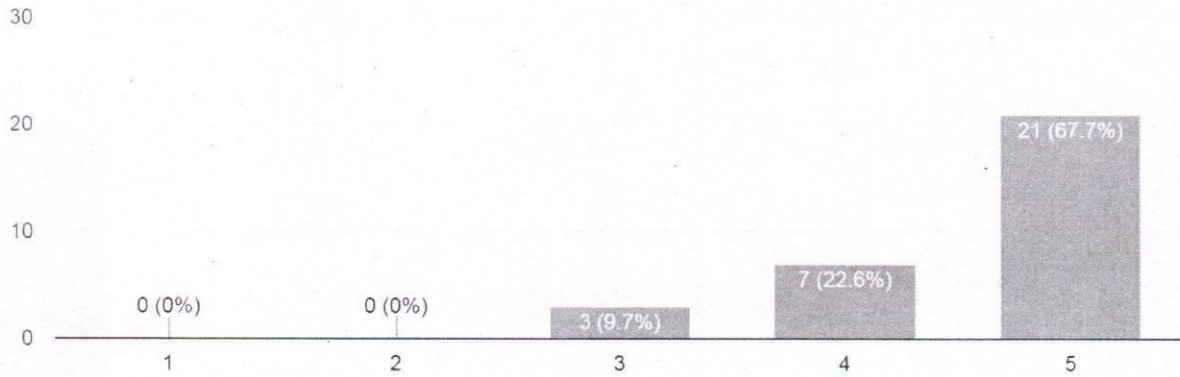



प्राचार्य/Principal
शाहीद राजगुरु कॉलेज ऑफ
एप्लाइड साइंसेस फॉर वुमैन
SHAHEED RAIGURU COLLEGE OF
APPLIED SCIENCES FOR WOMEN
दिल्ली विश्वविद्यालय/University of Delhi
वसुंधरा एनक्लेव, नई दिल्ली-110096
asundhara Enclave New Delhi-110096

Employee Feedback Analysis 2019

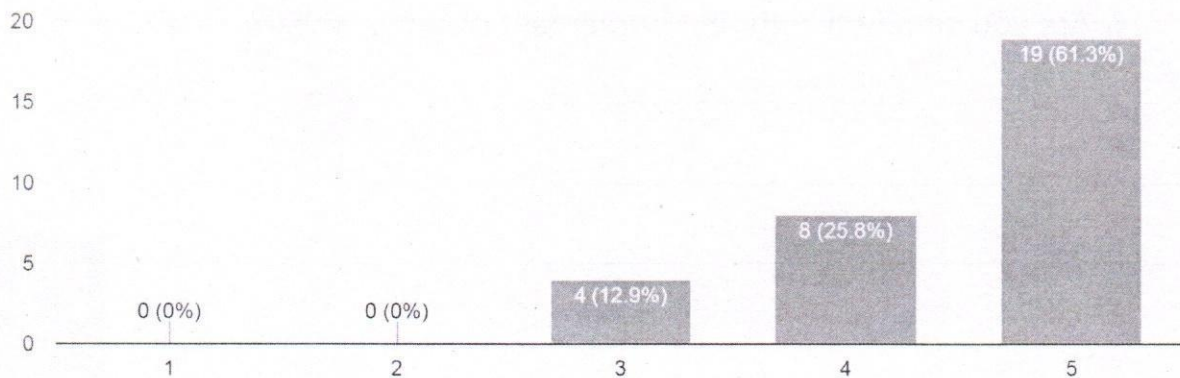
1. Are you satisfied with Recreational facilities available in the college?
(GYM, Sports, etc)

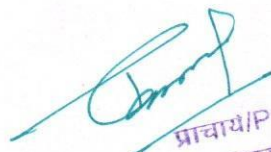
31 responses



2. Are you satisfied with Infrastructure facilities provided by the college?

31 responses

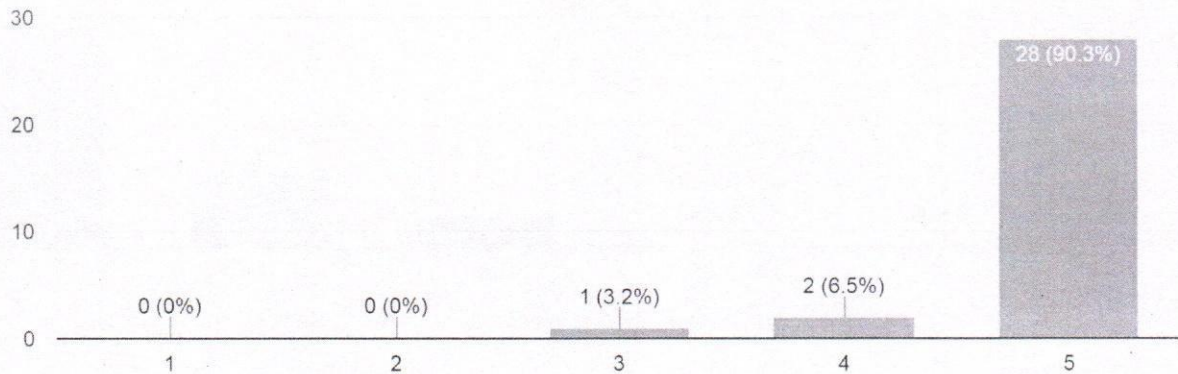



प्राचार्य/Principal
शहीद राजगुरु कॉलेज ऑफ
एप्लाइड साइंसेस फॉर वुमैन
SHAHEED RAJGURU COLLEGE OF
APPLIED SCIENCES FOR WOMEN
(दिल्ली विश्वविद्यालय/University of Delhi)
वासुंधरा एनक्लेव, नई दिल्ली-110096
Wasundhara Enclave New Delhi-110096

Employee Feedback Analysis 2019

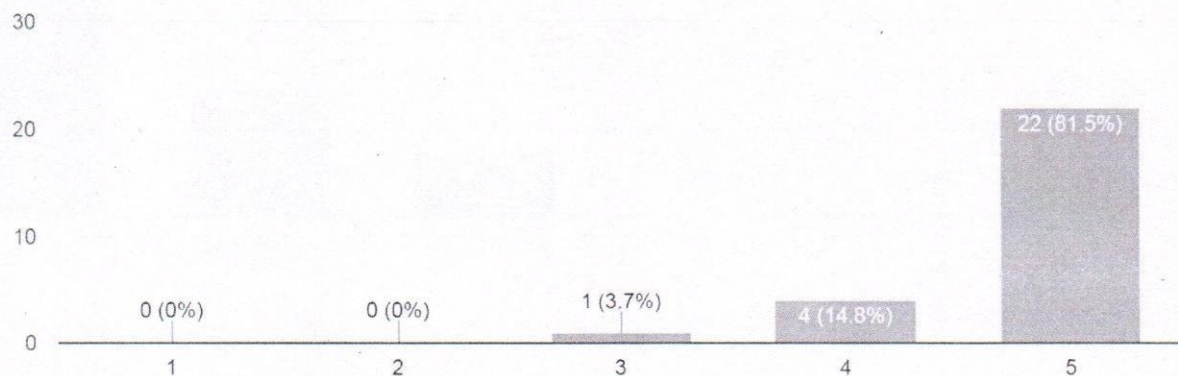
3. Are you satisfied with approval of leave application on time?

31 responses



4. Are you satisfied with reimbursement of medical bill?

27 responses

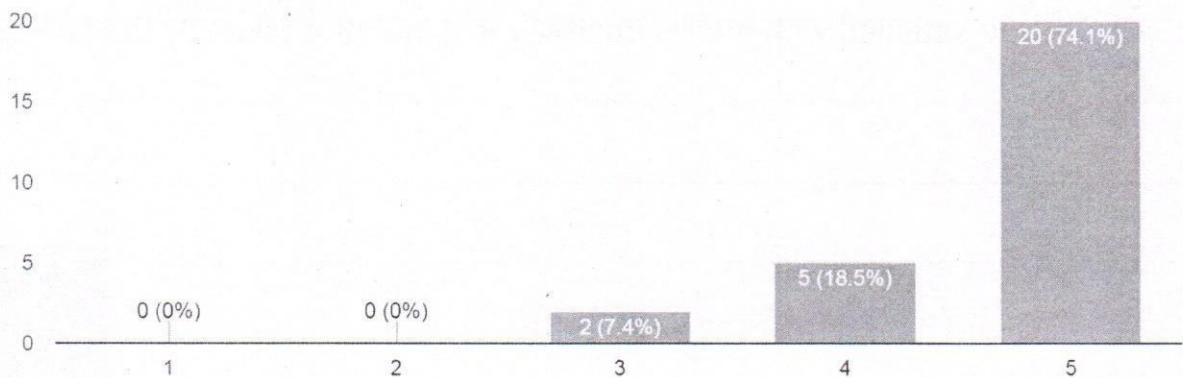


प्राचार्य/Principal
शाहीद राजगुरु कॉलेज ऑफ
एप्लाइड साइंसेस फॉर वुमैन
SHAHEED RAJGURU COLLEGE OF
APPLIED SCIENCES FOR WOMEN
दिल्ली विश्वविद्यालय/University of Delhi
पसुंधरा एनक्लेव, नई दिल्ली-110096
Pasundhara Enclave New Delhi-110096

Employee Feedback Analysis 2019

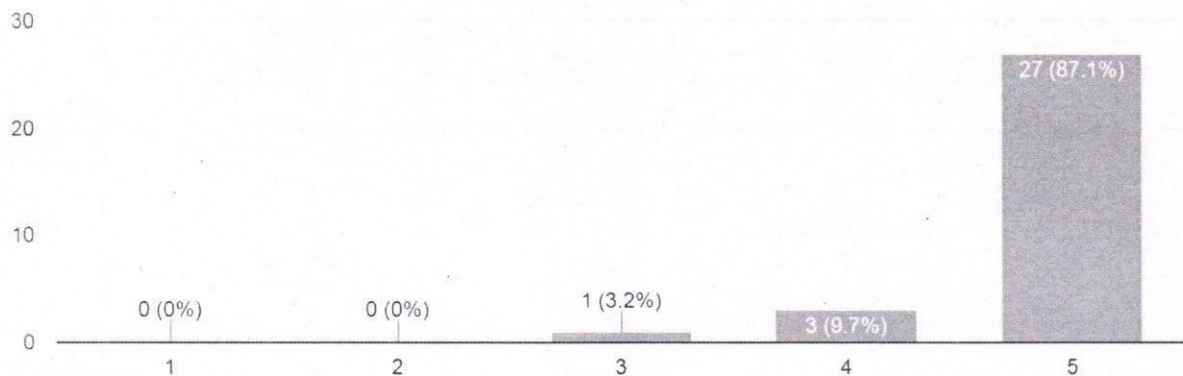
5. Are you satisfied with LTC bill : Advance & Settlement?

27 responses



6. Will you recommend courses offered by the college to others?

31 responses

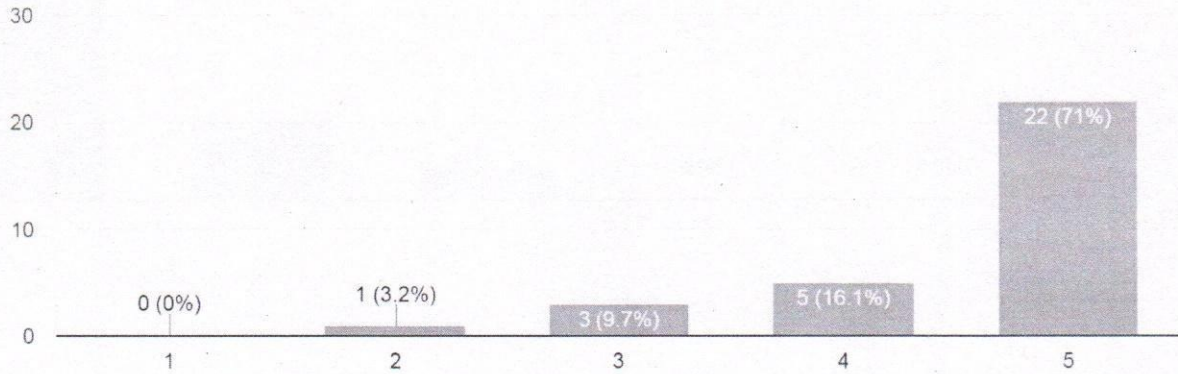


प्राचार्य/Principal
शहीद राजगुरु कॉलेज ऑफ
एप्लाइड साइंसेस फॉर वुमेन
SHAHEED RAJGURU COLLEGE OF
APPLIED SCIENCES FOR WOMEN
(दिल्ली विश्वविद्यालय/University of Delhi)
वसुंधरा एनक्लेव, नई दिल्ली-110096
Vasundhara Enclave, New Delhi-110096

Employee Feedback Analysis 2019

7. Are you satisfied with quality improvement initiative taken by the college?

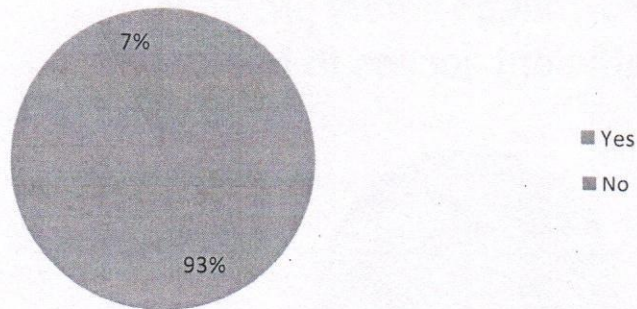
31 responses



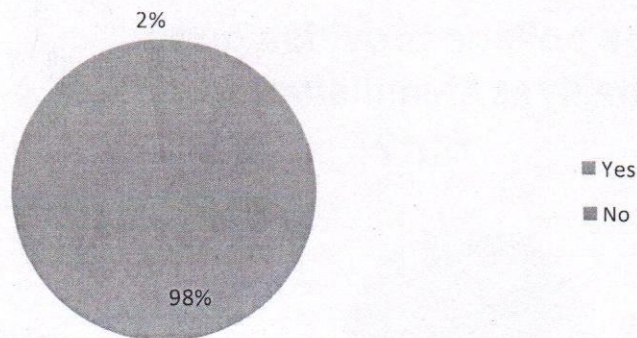
प्राचार्य/Principal
शाहीद राजगुरु कॉलेज ऑफ
एप्लाइड साइंसेस फॉर वुमैन
SHAHEED RAJGURU COLLEGE OF
APPLIED SCIENCES FOR WOMEN
(दिल्ली विश्वविद्यालय/University of Delhi)
वसुंधरा एनक्लेव, नई दिल्ली-110096
vasundhara Enclave New Delhi-110096

Alumni Feedback_2019: Analysis

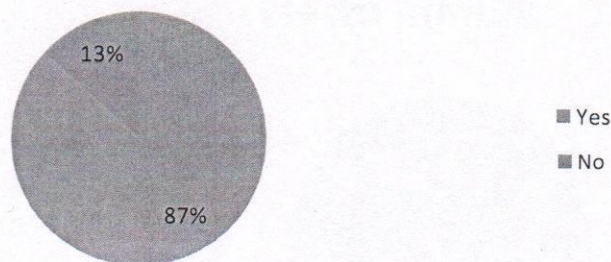
Has the college equipped you with sufficient technical knowledge?



Is college having adequate laboratories and infrastructure?

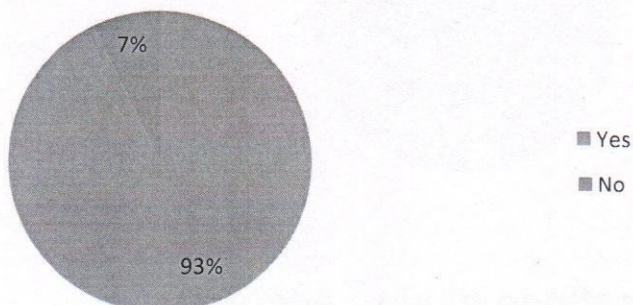


Does college organises various kind of activities for overall development of students?

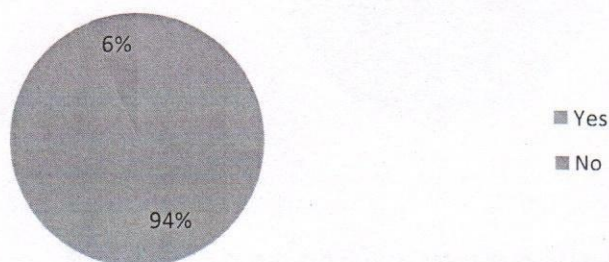


Alumni Feedback_2019: Analysis

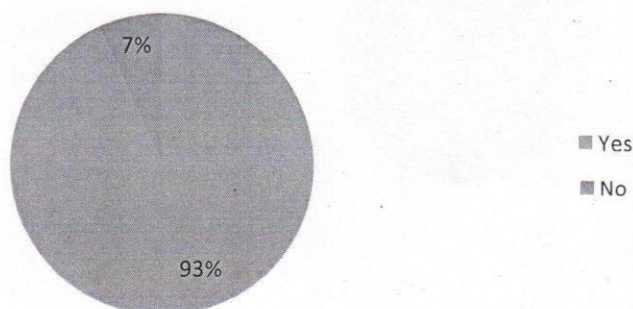
Does college library provides sufficient access to books?



Does college provides good hospitality as Alumni after passing out?



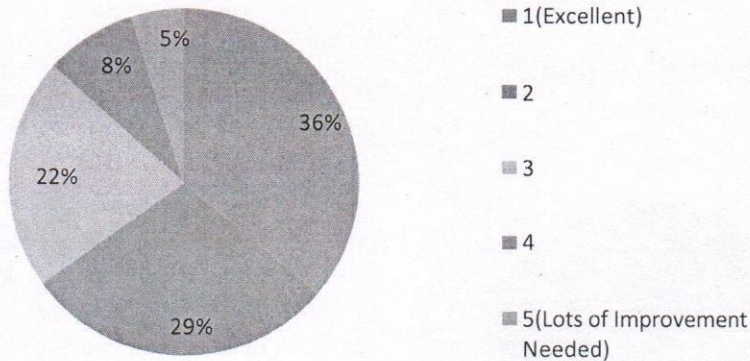
Are you willing to contribute for alumni meet?



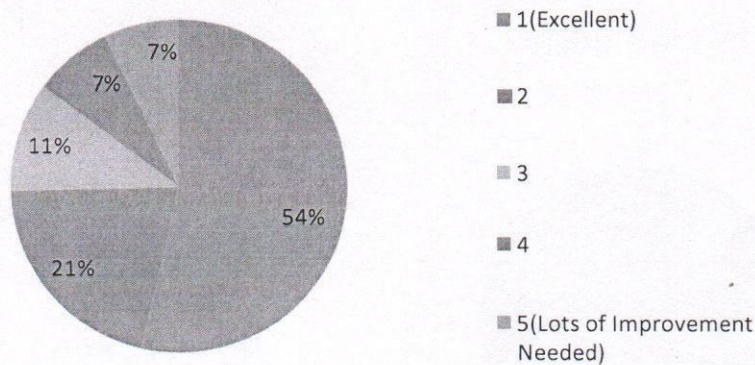
प्राचार्य/Principal
शाहीद राजगुरु कॉलेज ऑफ
एप्लाइड साइंसेस फॉर वुमैन
SHAHID RAJGURU COLLEGE OF
APPLIED SCIENCES FOR WOMEN
दिल्ली विश्वविद्यालय/University of Delhi
नसिंदरा एनक्लेव, नई दिल्ली-110096
Nasindara Enclave New Delhi-110096

Alumni Feedback_2019: Analysis

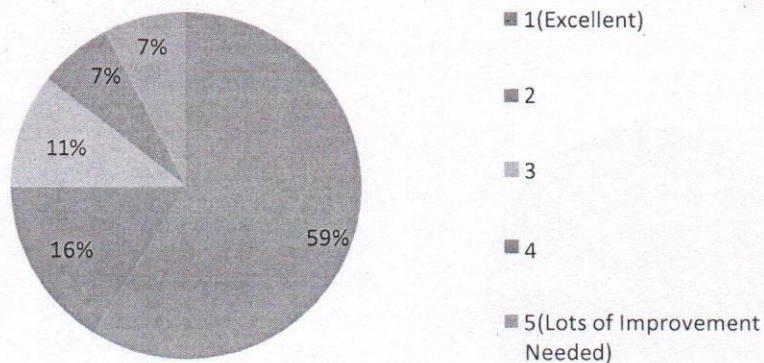
Are you willing to contribute for the development of your college?



Would you recommend others for the courses offered by this college?



Do you feel happy to be associated with this college?



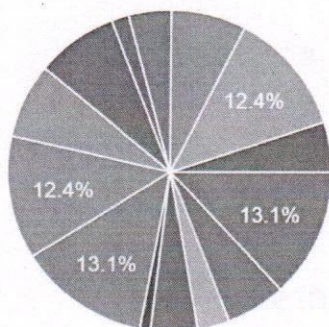
*No. Of Respondents = 263

प्राचार्य/Principal
शहीद राजगुरु कॉलेज ऑफ
एप्लाइड साइंसेस फॉर वुमैन
SHAHEED RAJGURU COLLEGE OF
APPLIED SCIENCES FOR WOMEN
(दिल्ली विश्वविद्यालय/University of Delhi)
वसुंधरा एनक्लेव, नई दिल्ली-110096
Vasundhara Enclave New Delhi-110096

Administration Feedback_2019: Analysis

Course pursued by the student?

282 responses

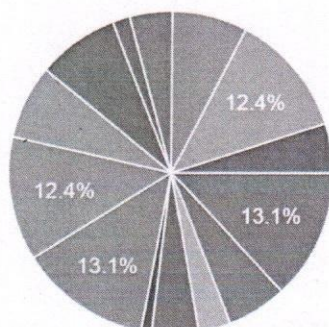


- B.A. (H) Psychology
- Bachelor of Business Administration...
- Bachelors of Management Studies
- B.Sc. (H) Biochemistry
- B.Sc. (H) Biomedical Science
- B.Sc. (H) Chemistry
- B.Sc. (H) Computer Scicence
- B.Sc. (H) Electronics

▲ 1/2 ▼

Course pursued by the student?

282 responses

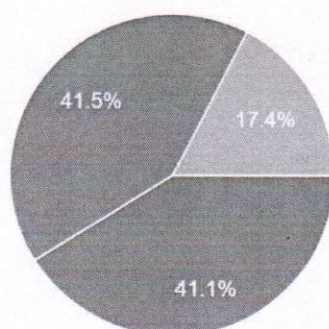


- B.Sc. (H) Food Technology
- B.Sc. (H) Instrumentation
- B.Sc. (H) Mathematics
- B.Sc. (H) Microbiology
- B.Sc. (H) Physics
- B.Sc. (H) Statistics

▲ 2/2 ▼

Present Semester?

282 responses



- 2
- 4
- 6

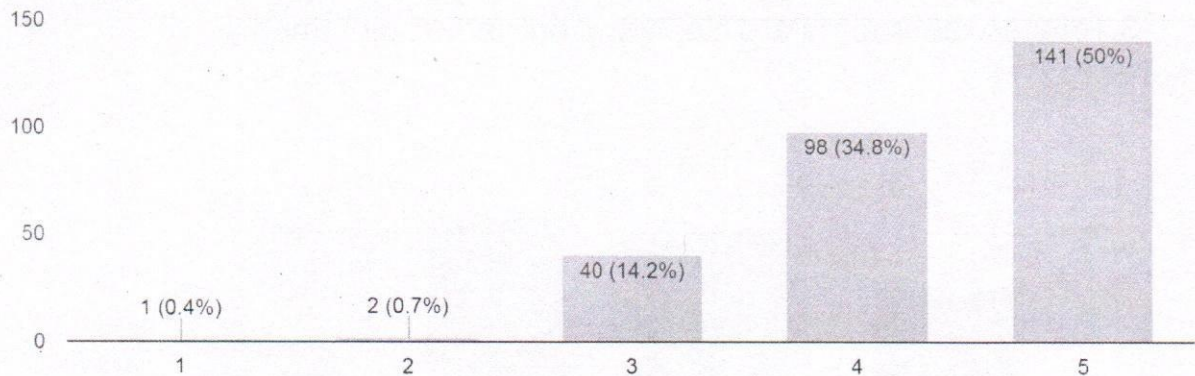
[Signature]

प्राचार्य/Principal
गद्दीव राजगुरु कॉलेज ऑफ
अप्लाइड साइंसेस फॉर वुमैन
APPLIED SCIENCES FOR WOMEN
दिल्ली विश्वविद्यालय/University of Delhi
वसुंधरा एनक्लेव, नई दिल्ली-110096
vasundhara Enclave New Delhi-110096

Administration Feedback_2019: Analysis

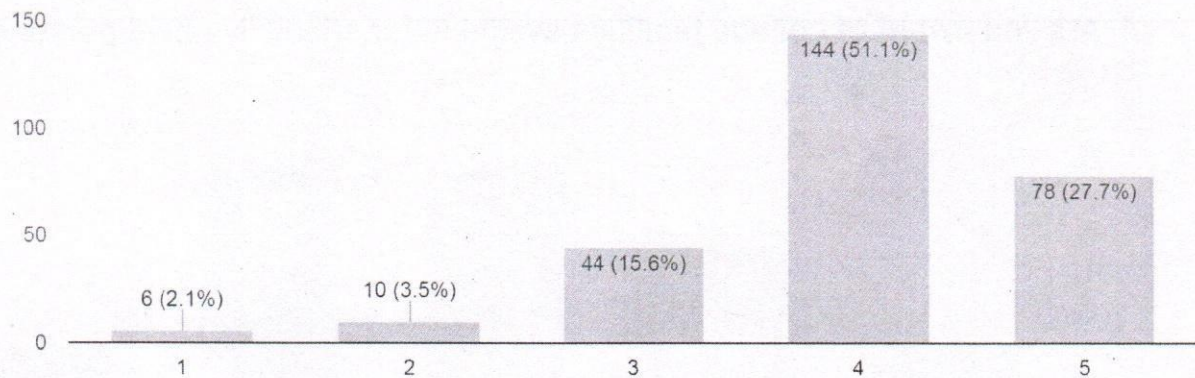
1.The campus is green and eco-friendly.

282 responses



2. The classrooms are clean and well maintained.

282 responses

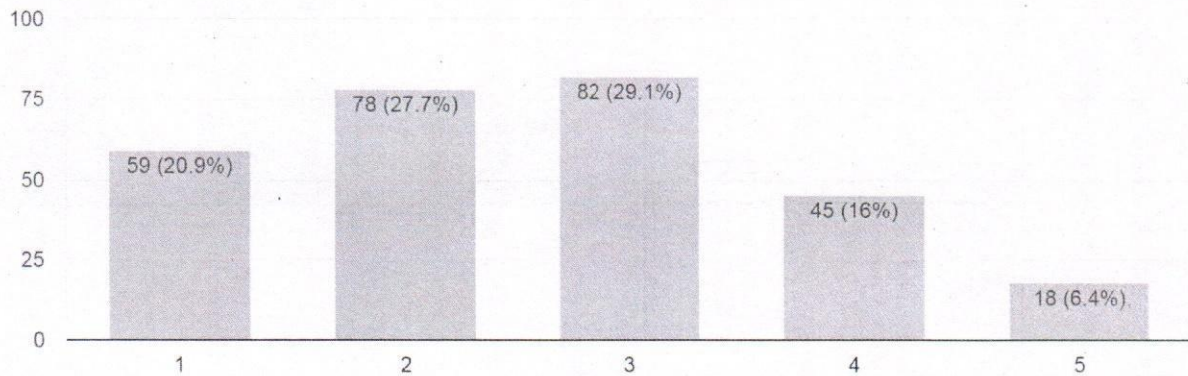


प्राचार्य/Principal
शहीद राजगुरु कॉलेज ऑफ
एप्लाइड साइंसेस फॉर वुमैन
SHAHEED RAJGURU COLLEGE OF
APPLIED SCIENCES FOR WOMEN
दिल्ली विश्वविद्यालय/University of Delhi
एसघरा एनक्लेव, नई दिल्ली-110096
Sanghara Enclave New Delhi-110096

Administration Feedback_2019: Analysis

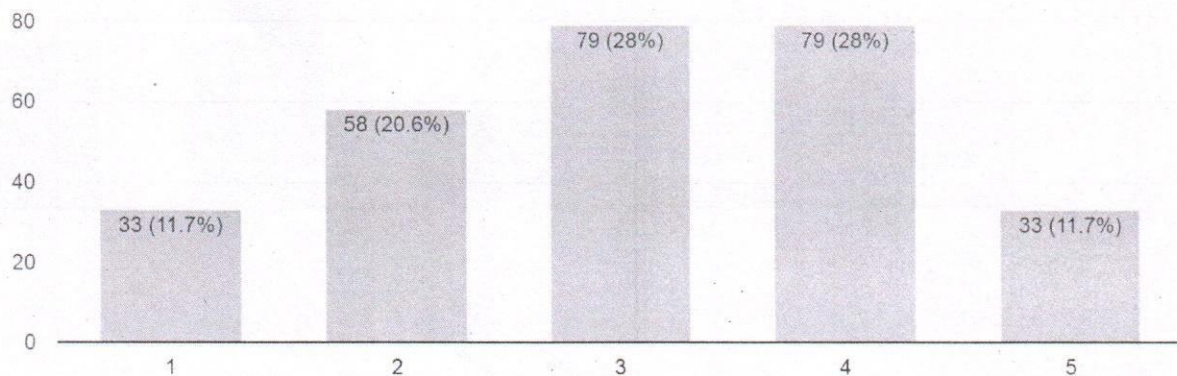
3.Toilets/washrooms are clean and properly maintained.


282 responses



4. Are you aware of college facilities available for specially abled persons?

282 responses

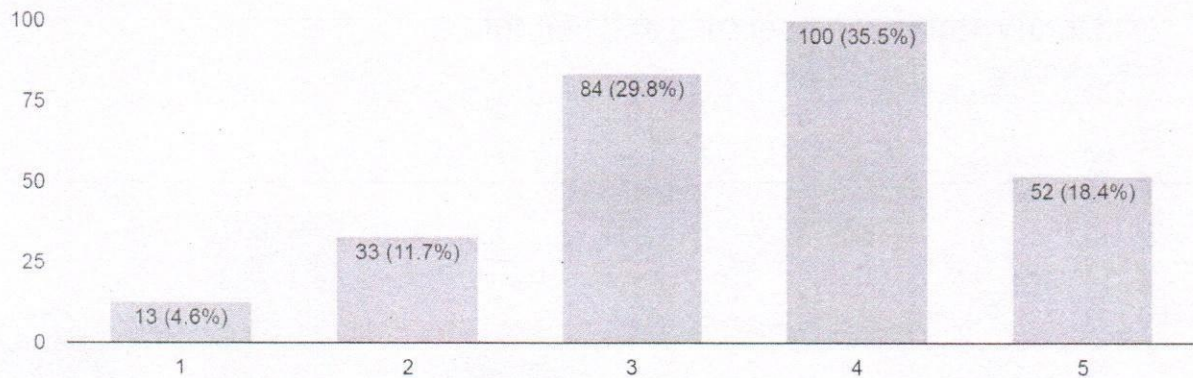



प्रिन्सिपल/Principal
शाहीव राजगुरु कॉलेज ऑफ
एप्लाइड साइंसेस फॉर वुमैन
SHAHEED RAJGURU COLLEGE OF
APPLIED SCIENCES FOR WOMEN
(दिल्ली विश्वविद्यालय/University of Delhi)
वसुंधरा एनक्लेव, नई दिल्ली-110096
usundhara Enclave New Delhi-110096

Administration Feedback_2019: Analysis

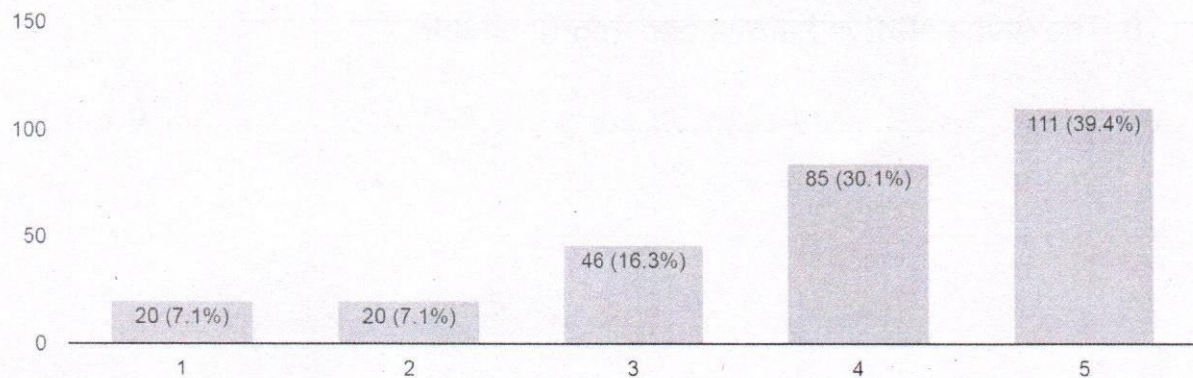
5. Equipment in the lab(s) is in good working condition.

282 responses



6. Lab staff is co-operative and helpful.

282 responses

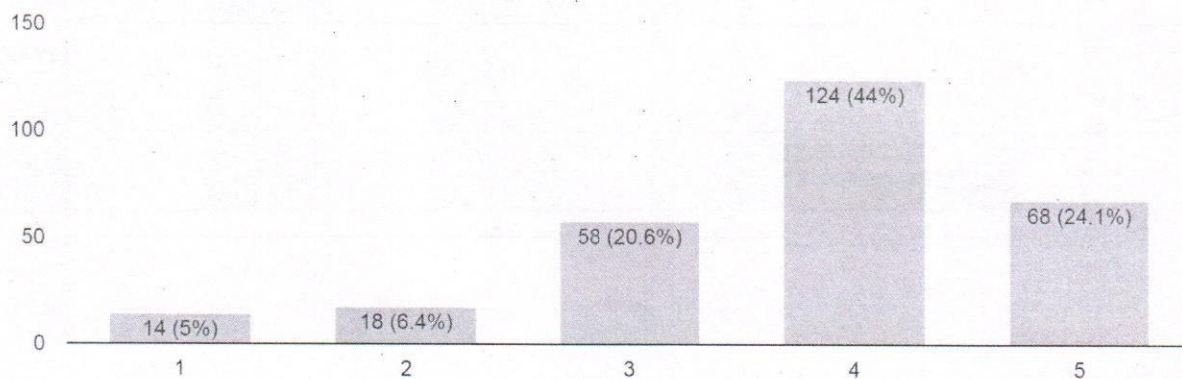


प्राचार्य/Principal
शहीद राजगुरु कॉलेज ऑफ
एप्लाइड साइंसेस फॉर वुमैन
SHAHEED RAJGURU COLLEGE OF
APPLIED SCIENCES FOR WOMEN
मिर्जापुर विभाग/University of Delhi
मसूदा एनक्लेव, नई दिल्ली-110096
Masoodhara Enclave New Delhi-110096

Administration Feedback_2019: Analysis

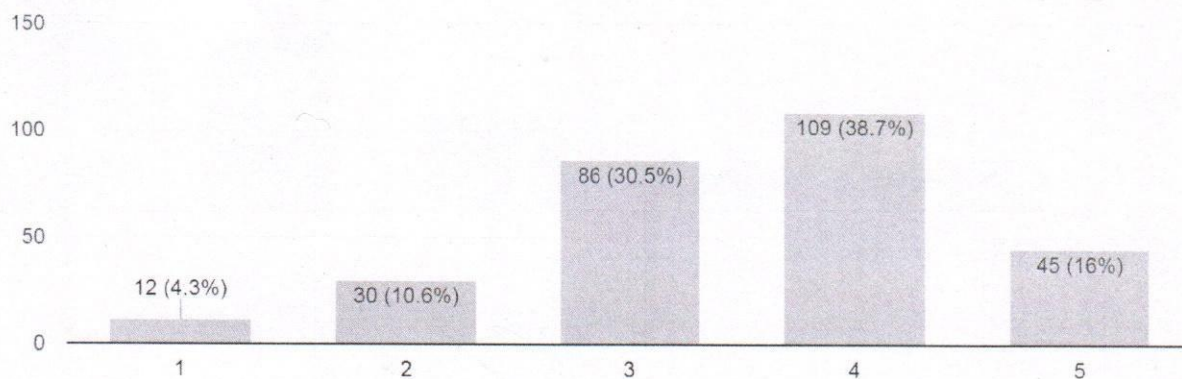
7. Library staff is co-operative and helpful.

282 responses



8. The office staff is helpful and approachable.

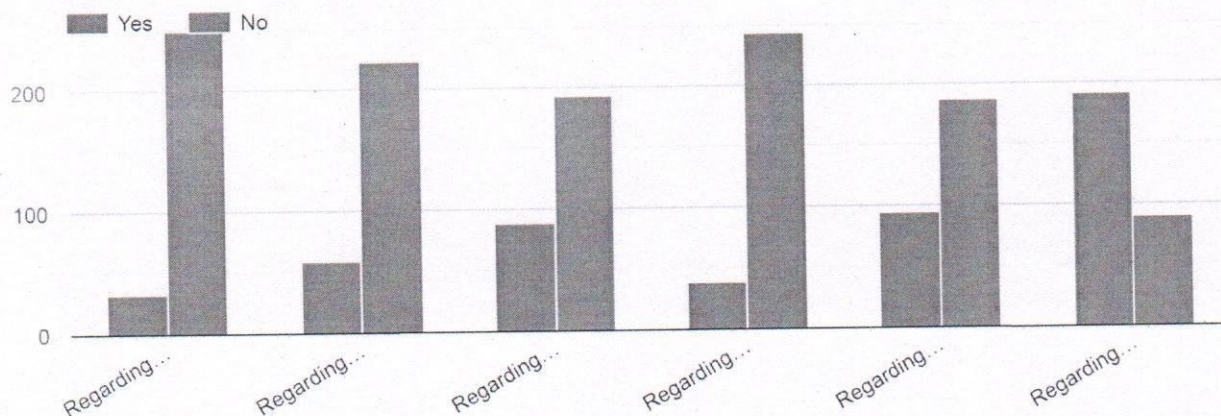
282 responses



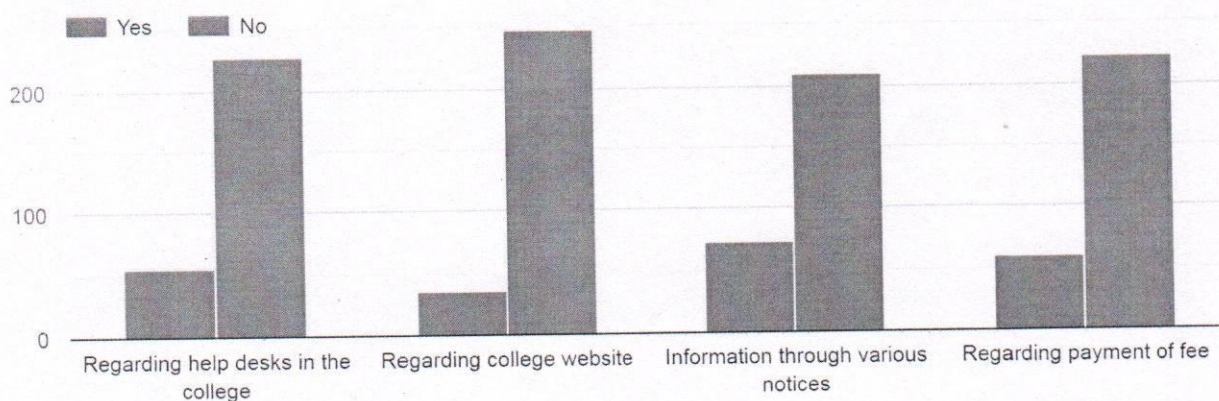
प्राचार्य/Principal
गर्गी राजगुरु कॉलेज ऑफ
अप्लाइड साइंसेस फॉर वुमन
SHAHEED RAJGURU COLLEGE OF
APPLIED SCIENCES FOR WOMEN
(दिल्ली विश्वविद्यालय/University of Delhi)
वसुंधरा एनक्लेव, नई दिल्ली-110096
asundhara Enclave New Delhi-110096

Administration Feedback_2019: Analysis

9. Problems you face in the library?



10. Hurdles that you encountered during the admission process?

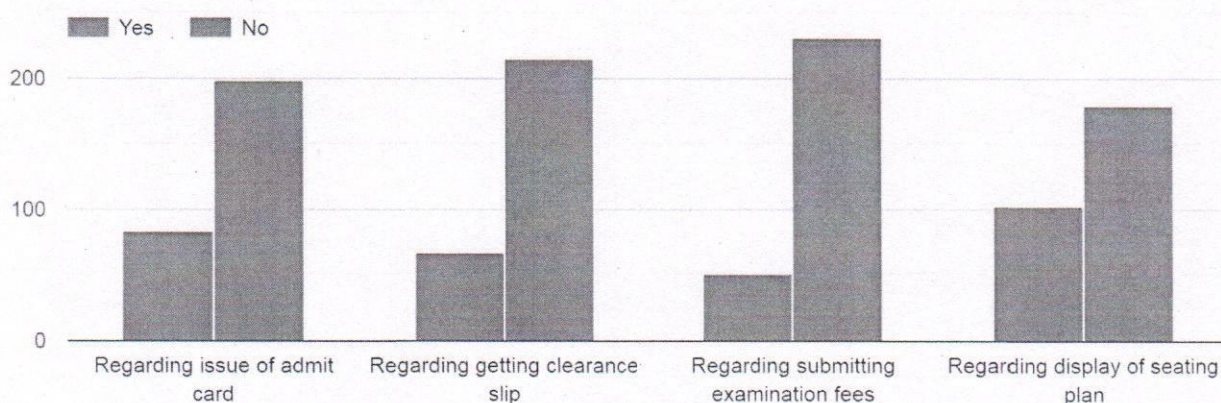


[Handwritten Signature]

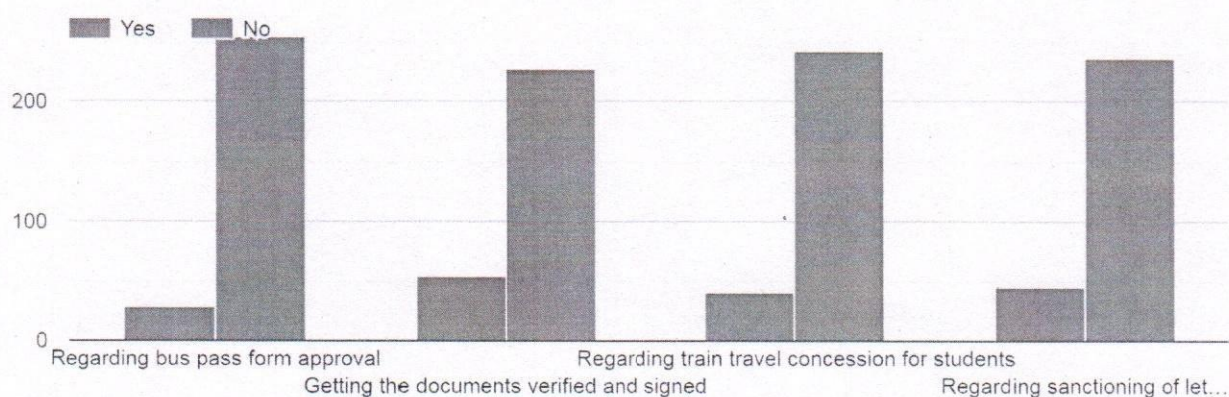
प्राचार्य/Principal
 शहीद राजगुरु कॉलेज ऑफ
 एप्लाइड साइंसेस फॉर वुमैन
 SHAHEED RAJGURU COLLEGE OF
 APPLIED SCIENCES FOR WOMEN
 (दिल्ली विश्वविद्यालय/University of Delhi)
 वसुंधरा एनक्लेव, नई दिल्ली-110096
 Vasundhara Enclave New Delhi-110096

Administration Feedback_2019: Analysis

11. Problems you face in relation to examinations?



12. Problems you face, if any, concerning the administration?

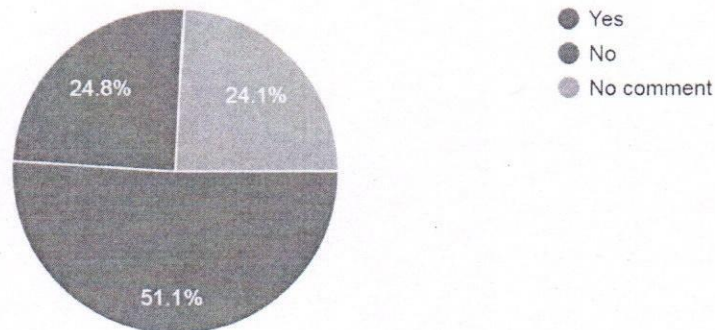


प्राचार्य/Principal
 शाहीद राजगुरु कॉलेज ऑफ
 एप्लाइड साइंसेस फॉर वुमैन
 SHAHEED RAJGURU COLLEGE OF
 APPLIED SCIENCES FOR WOMEN
 दिल्ली विश्वविद्यालय/University of Delhi
 संजयपुर एन्क्लेव, नई दिल्ली-110096
 Sanjaypur Enclave New Delhi-110096

Administration Feedback_2019: Analysis

13. Are you in favour of an expenditure of about 6-7 lakhs for a celebrity evening of 30-45 minutes during the college festival?

282 responses



प्राचार्य/Principal
शाहीद राजगुरु कॉलेज ऑफ
एप्लाइड साइंसेस फॉर वुमैन
SHAHEED RAJGURU COLLEGE OF
APPLIED SCIENCES FOR WOMEN
(दिल्ली विश्वविद्यालय/University of Delhi)
वसुंधरा एनक्लेव, नई दिल्ली-110096
Basundhara Enclave New Delhi-110096



शहीद राजगुरु कॉलेज ऑफ एप्लाइड साइंसेस फॉर वुमैन SHAHEED RAJGURU COLLEGE OF APPLIED SCIENCES FOR WOMEN

(दिल्ली विश्वविद्यालय)

(UNIVERSITY OF DELHI)

वसुंधरा एनक्लेव (चिल्ला स्पोर्ट्स कॉम्प्लेक्स के पास)

Vasundhara Enclave (Adjoining Chilla Sports Complex)

दिल्ली-110096

Delhi-110096

दूरभाष : 22623503, 22623505

Phone(s) : 22623503, 22623505

दूरभाष/फैक्स : 22623504

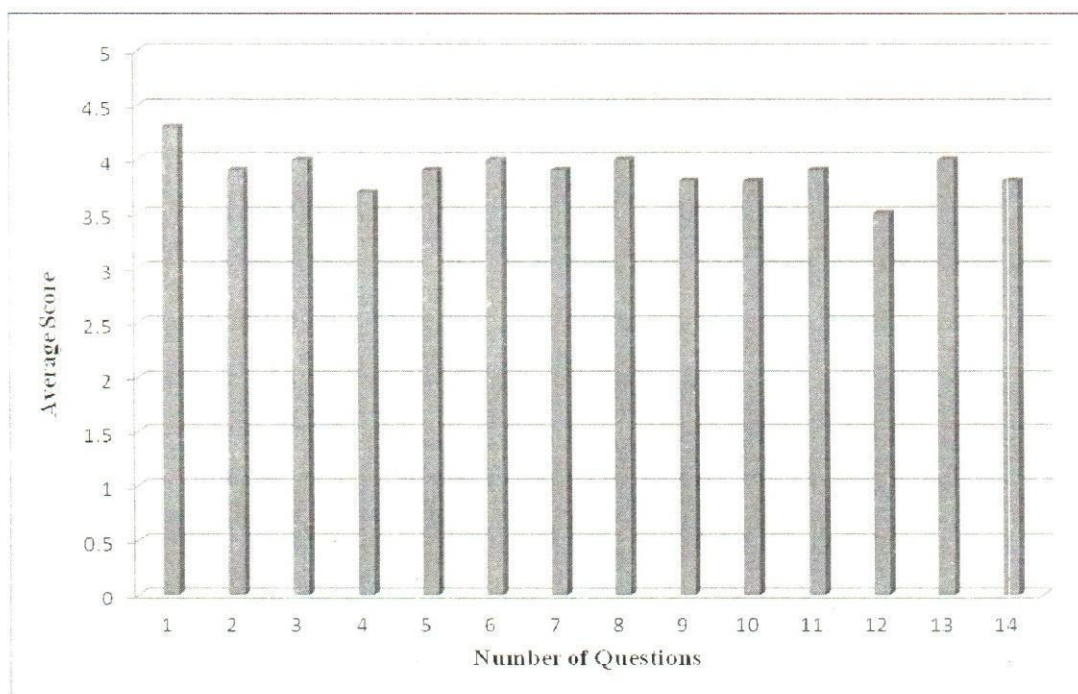
Phone/Fax : 22623504

संदर्भ सं./Ref. No. SRCASW/.....

दिनांक/Date.....

Feedback 2017-18

Analysis for Faculty (Feedback from students)



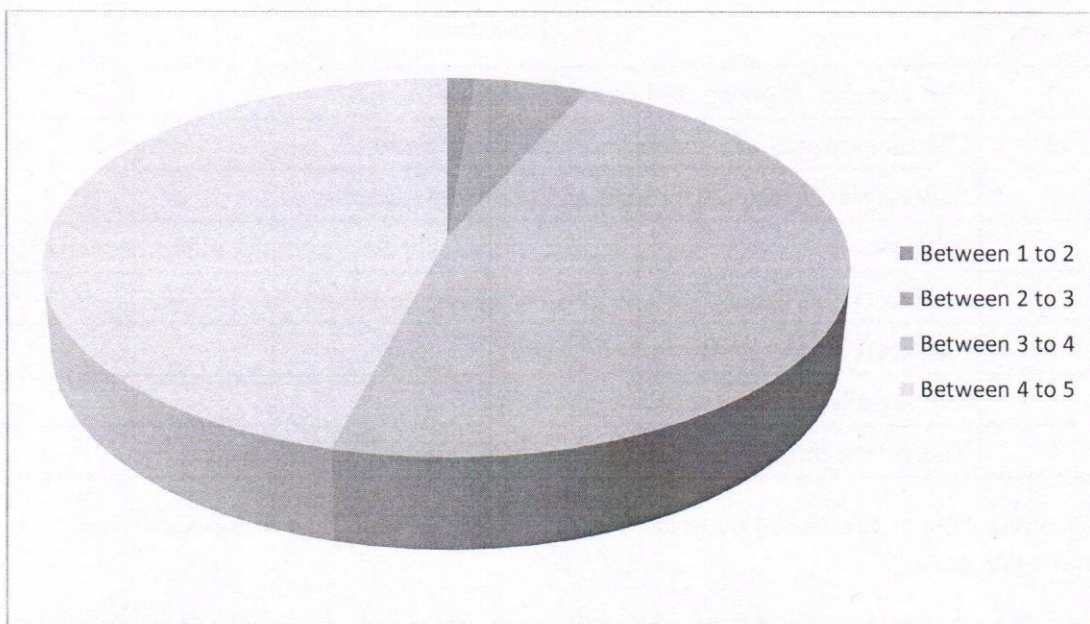
2	The teacher is able to make the concepts understandable for the class ?
3	The teacher is skilled to handle indiscipline behavior in the class?
4	The teacher is able to stimulate interest in the class ?
5	The teacher encourages participation and discussion in the class?
6	The teacher conducts tests or assignments or quizzes or seminars or presentations in the class?
7	The teacher shares and discusses the answers of class tests after the conduct of tests?
8	The teaching adequately covers all topic listed in the syllabus at relevant speed?
9	The teacher refers and encourages the students to update themselves about latest developments in the concerned subject?
10	The teacher helps and mentors students towards overall personality development?
11	The teacher ensures that the class has understood the topic taught by him/her?

प्रधाना/Principal
शहीद राजगुरु कॉलेज ऑफ
एप्लाइड साइंसेस फॉर वुमैन
SHAHEED RAJGURU COLLEGE OF
APPLIED SCIENCES FOR WOMEN
दिल्ली विश्वविद्यालय/University of Delhi
वसुंधरा एनक्लेव, नई दिल्ली-110096
Vasundhara Enclave, New Delhi-110096

The feedback from more than 700 students was collected and analyzed.

- The feedback from the students reflected an appreciation for the faculty.
- The adherence to lecture and practical/tutorial schedule scored the highest.
- The faculty's response to indiscipline marked a big positive.
- The faculty is available to the students.
- In the present scenario of modern technology, the need for use of more modern methods of teaching aids is expected.

Overall Students Feedback for Faculty (Average)

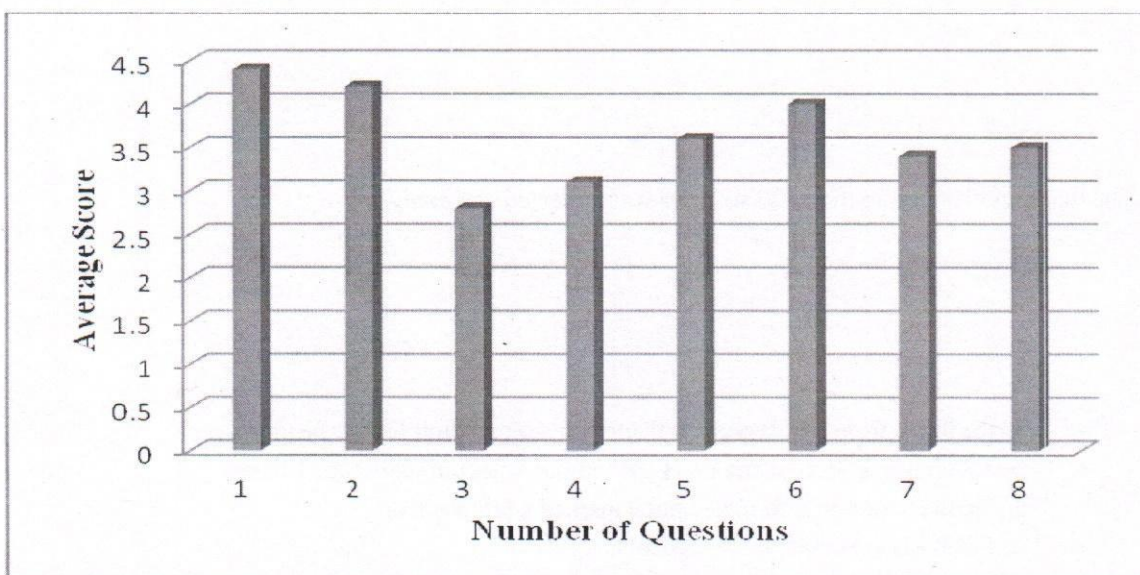


The feedback for 79 faculty members was received and analyzed.

- The overall faculty scored an average of 3.9 on overall score of 5, indicative of the good quality of faculty and teaching methodology.
- 93% faculty had the score lying in the range 3-5.

प्राचार्य/Principal
शहीद राजगुरु कॉलेज ऑफ
एप्लाइड साइंसेस फॉर वुमेन
SHAHEED RAJGURU COLLEGE OF
APPLIED SCIENCES FOR WOMEN
दिल्ली विश्वविद्यालय/University of Delhi
समस्त एनक्लेव, नई दिल्ली-110006
Share Enclave New Delhi-110006

Administration Services and Infrastructure Analysis (Feedback from students)



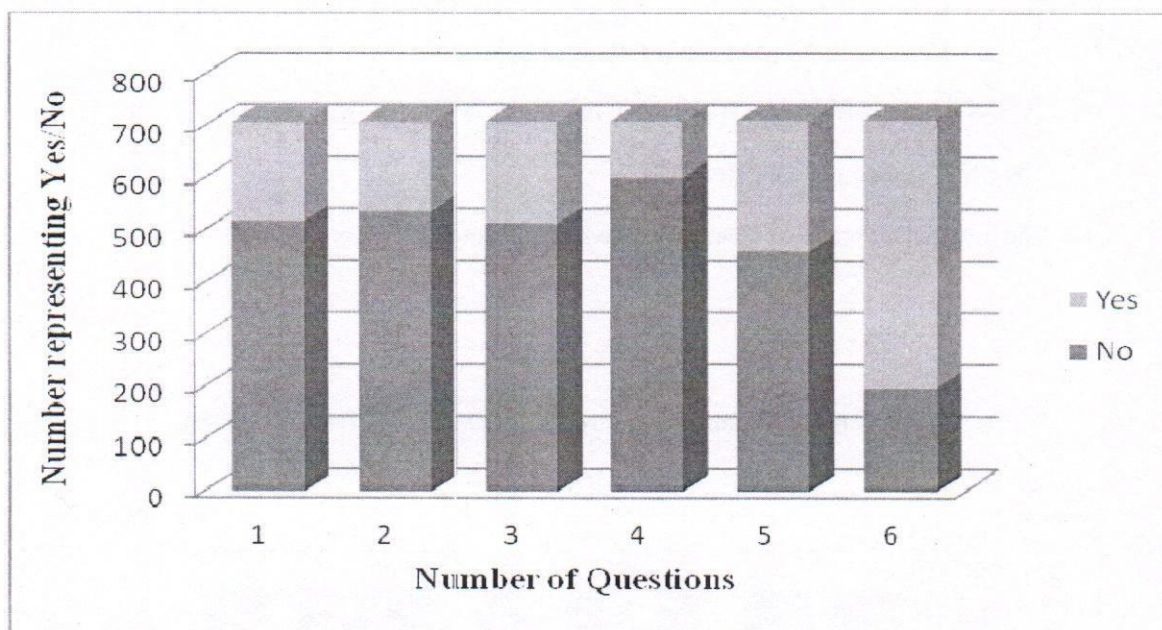
S.No.	Questions
1	The campus is green and eco-friendly.
2	The classrooms are clean and well maintained.
3	Toilets/washrooms are clean and properly maintained.
4	Are you aware of college facilities available for specially abled persons?
5	Equipment in the lab(s) is in good working condition.
6	Lab staff is co-operative and helpful.
7	Library staff is co-operative and helpful.
8	The office staff is helpful and approachable.

In the survey from more than 700 students for infrastructure and administrative services overall response was good.

- The students were found to be appreciative of the green and eco-friendly environment of the college campus.
- An extra effort to create awareness of the facilities available on campus for the specially - abled persons is required.
- The laboratory staff was appreciated for their efforts.

[Signature]
 प्राचार्य/Principal
 शाहीद राजगुरु कॉलेज ऑफ
 एप्लाइड साइंसेस फॉर वुमेन
 SHAHEED RAJGURU COLLEGE OF
 APPLIED SCIENCES FOR WOMEN
 (दिल्ली विश्वविद्यालय/University of Delhi)
 वसुंधरा एनक्लेव, नई दिल्ली-110095
 'asundhara Enclave New Delhi-110095'

Library Facilities (Feedback from students)



S.No.	Questions
1	Problems you face in the library? [Regarding issue and return of books]
2	Problems you face in the library? [Regarding condition/ state of books]
3	Problems you face in the library? [Regarding internet connection]
4	Problems you face in the library? [Regarding RFID system]
5	Problems you face in the library? [Regarding library timings]
6	Problems you face in the library? [Regarding availability of sufficient number of books]

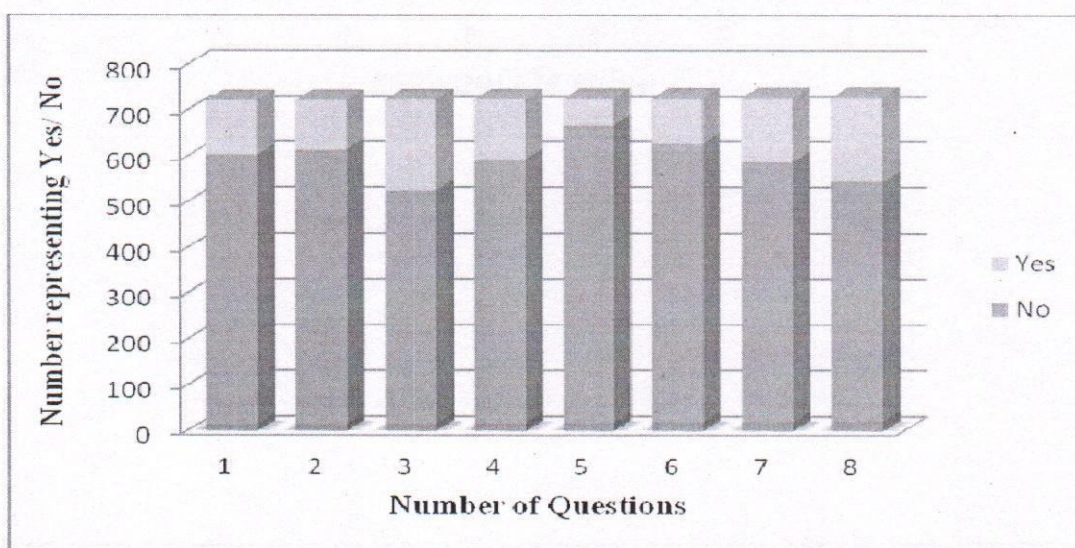
The response from about 700 students, the survey indicated

[Signature]

प्राचार्य/Principal
 शहीद राजगुरु कॉलेज ऑफ
 एप्लाइड साइंसेस फॉर वुमैन
 SHAHED RAJGURU COLLEGE OF
 APPLIED SCIENCES FOR WOMEN
 -0- विश्वविद्यालय/University of Delhi

- 71% of the students had no problems in the library and its services.
- The RFID system got a big positive.
- The insufficient books of course seem to be the main concern.

Admission and Examination Procedure (Feedback from students)



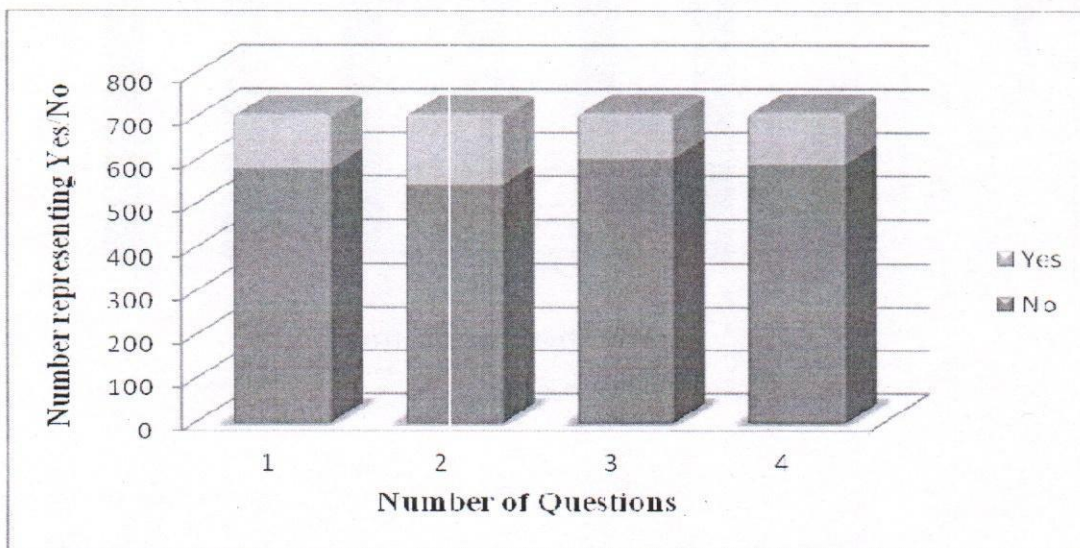
S.No.	Questions
1	Hurdles that you encountered during the admission process? [Regarding help desks in the college]
2	Hurdles that you encountered during the admission process? [Regarding college website]
3	Hurdles that you encountered during the admission process? [Information through various notices]
4	Hurdles that you encountered during the admission process? [Regarding payment of fee]
5	Problems you face in relation to examinations? [Regarding issue of admit card]
6	Problems you face in relation to examinations? [Regarding getting clearance slip]
7	Problems you face in relation to examinations? [Regarding submitting examination fees]
8	Problems you face in relation to examinations? [Regarding display of seating plan]

[Signature]

प्राचार्य/Principal
 शहीद राजगुरु कॉलेज ऑफ
 एप्लाइड साइंसेस फॉर वूमन
 SHAHEED RAJGURU COLLEGE OF
 APPLIED SCIENCES FOR WOMEN
 (फिल्म) विश्वविद्यालय/University of Film & Television

- For the admission procedure, no major grievance was present, with information for admission process being slightly lacking.
- For the examination too, no major grievance was present, with the display for seating plan insufficient. .

Administration Services (Feedback from students)

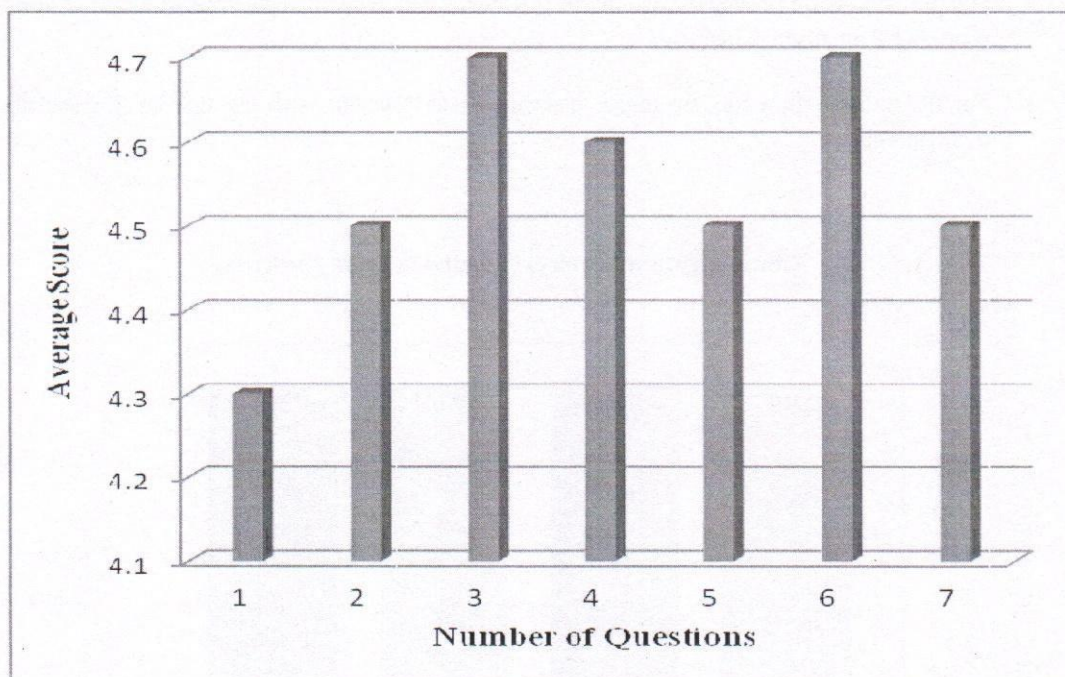


S.No.	Questions
1	Problems you face, if any, concerning the administration? [Regarding bus pass form approval]
2	Problems you face, if any, concerning the administration? [Getting the documents verified and signed]
3	Problems you face, if any, concerning the administration? [Regarding train travel concession for students]
4	Problems you face, if any, concerning the administration? [Regarding sanctioning of letters and applications such as provisional certificates, marksheets etc.]

No major problem was indicated in the survey from students for administrative services.

Administrative Services (Employee Feedback)

प्राचार्य/Principal
शहीद राजगुरु कॉलेज ऑफ
एप्लाइड साइंसेस फॉर वुमैन
SHAHEED RAJGURU COLLEGE OF
APPLIED SCIENCES FOR WOMEN
जिल्हा विद्यापीठ/University of Delhi
संघर्ष एनक्लेव, नई दिल्ली-110016
Sardhana Enclave, New Delhi-110016



S.No	Questions
1	Are you satisfied with Recreational facilities available in the college? (GYM, Sports, etc)
2	Are you satisfied with Infrastructure facilities provided by the college?
3	Are you satisfied with approval of leave application on time?
4	Are you satisfied with reimbursement of medical bill?
5	Are you satisfied with LTC bill : Advance & Settlement?
6	Will you recommend courses offered by the college to others?
7	Are you satisfied with quality improvement initiative taken by the college?

प्राचार्य/Principal
 शहीद राजगुरु कॉलेज ऑफ
 एप्लाइड साइंसेस फॉर वूमन
 SHAHEED RAJGURU COLLEGE OF
 APPLIED SCIENCES FOR WOMEN
 विश्वविद्यालय/University of Delhi
 कंसट्रिक्ट, नई दिल्ली-11006
 New Delhi-110062

The survey from the employees was not a success with majority refraining from participating.

The survey did not include the non-permanent faculty.

The responding employees appreciated the timely dispersal of LTC bills and leave applications.



शहीद राजगुरु कॉलेज ऑफ एप्लाइड साइंसेस फॉर वुमैन SHAHEED RAJGURU COLLEGE OF APPLIED SCIENCES FOR WOMEN

(दिल्ली विश्वविद्यालय)

वसुंधरा एनक्लेव (चिल्ला स्पोर्ट्स कॉम्प्लेक्स के पास)

दिल्ली-110096

दूरभाष : 22623503, 22623505

दूरभाष/फैक्स : 22623504

(UNIVERSITY OF DELHI)

Vasundhara Enclave (Adjoining Chilla Sports Complex)

Delhi-110096

Phone(s) : 22623503, 22623505

Phone/Fax : 22623504

संदर्भ सं./Ref. No. SRCASW/.....

दिनांक/Date.....

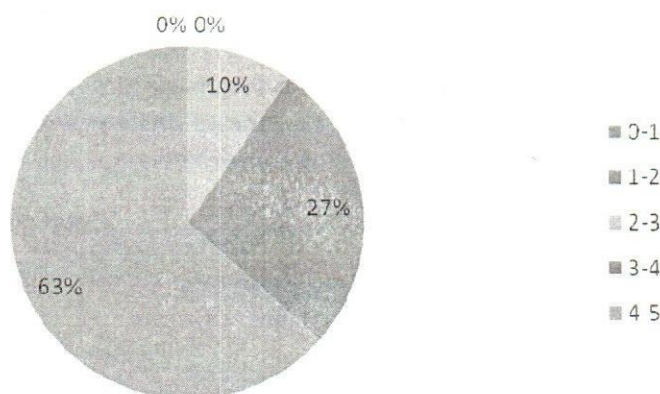
Feedback 2016-2017

FEEDBACK ANALYSIS

• Feedback on Faculty

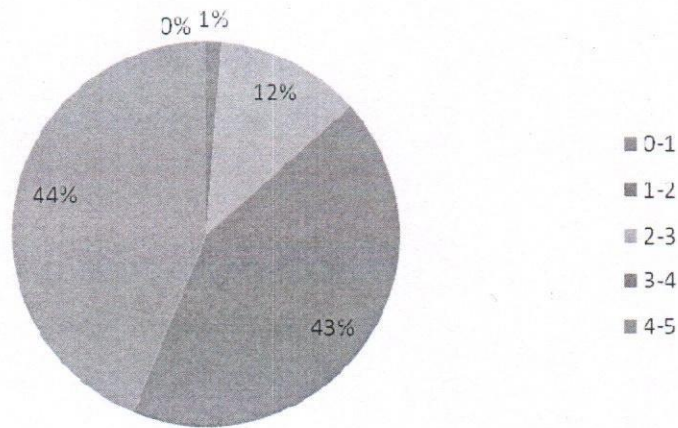
Student Feedback is an important recipe for bringing about the improvement in teaching. A balanced questionnaire with questions ranging from punctuality, regularity, innovation in teaching methodology, preparation for the class, awareness of the recent advancements in the field etc has been designed. The scale chosen has a range from 1 to 5, with 1 being lowest and 5 being highest, for a total of 25 different teaching standard parameters.

Regularity in taking classes.

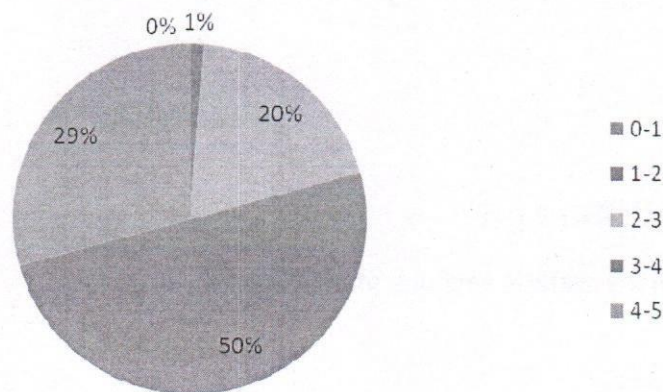


[Signature]
 शाहीद राजगुरु कॉलेज ऑफ एप्लाइड साइंसेस फॉर वुमैन
 SHAHEED RAJGURU COLLEGE OF APPLIED SCIENCES FOR WOMEN
 वसुंधरा एनक्लेव, चिल्ला स्पोर्ट्स कॉम्प्लेक्स के पास
 Vasundhara Enclave, Chilla Sports Complex

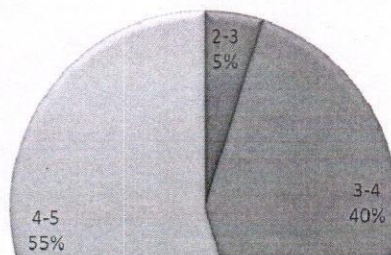
Refers to latest developments in the field.



Uses innovative teaching methods.



Overall score



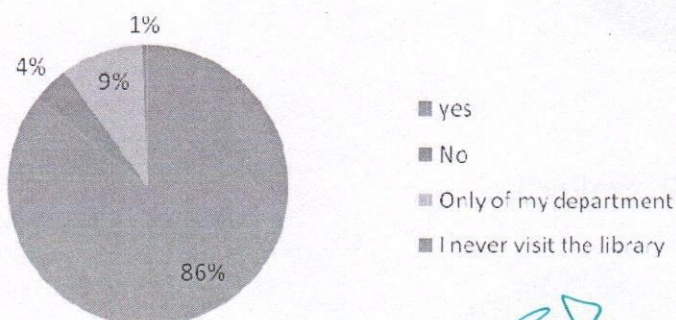
[Signature]

प्राचार्य/Principal
 शहीद राजगुरु कॉलेज ऑफ
 एप्लाइड साइंसेस फॉर वुमैन
 SHAHEED RAJGURU COLLEGE OF
 APPLIED SCIENCES FOR WOMEN
 दिल्ली विश्वविद्यालय/University of Delhi
 वसुधरा एनक्लेव, नई दिल्ली-110009
 Vasudhara Enclave, New Delhi-110009

The lowest average on the parameters corresponds to "**Innovation in Teaching Methods**" with an average value of 3.6 and the highest average corresponds to the parameter "**Availability of the Teacher**" with an average value of 4.2. The net average for the faculty is 3.97. The chart in red shows the distribution of average overall scores. No faculty had a score less than 2.6 with the majority having a score 4 to 5. The scores suggest that majorly faculty members in the college are sincere and put in their best efforts to satisfy the student's curiosity and fuel their love of learning.

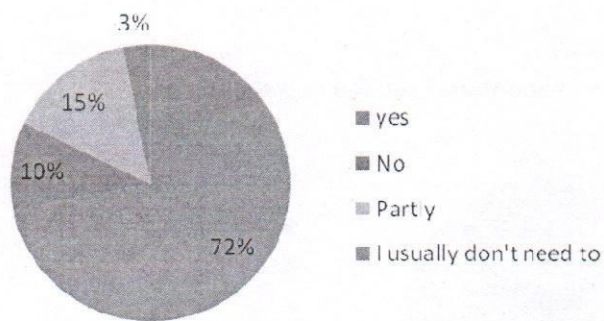
• **Feedback for Library**

Are you aware of the various sections of the library?

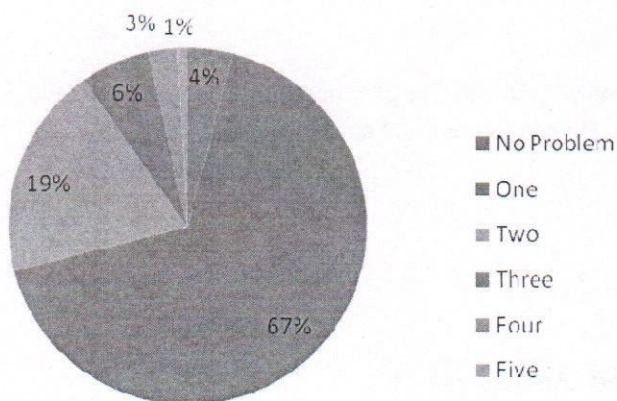


प्राचार्य/Principal
 शहीद राजगुरु कॉलेज ऑफ
 एप्लाइड साइंसेस फॉर वुमैन
 SHAHEED RAJGURU COLLEGE OF
 APPLIED SCIENCES FOR WOMEN
 (दिल्ली विश्वविद्यालय/University of Delhi)
 वसुंधरा एनक्लेव, नई दिल्ली-110096
 Vasundhara Enclave New Delhi-110096

Do you know how to access the relevant information from e-library?



Problems encountered related to Library

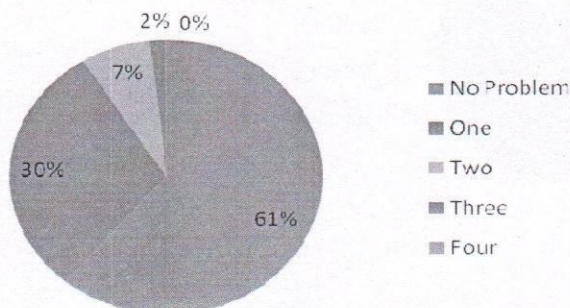


The common problems that the students stated related to internet connection in the library and duration of issue of books.

• Feedback for Administration

[Signature]
 प्राचार्य/Principal
 शाहीद राजगुरु कॉलेज ऑफ
 एप्लाइड साइंसेस फॉर वुमैन
 SHAHEED RAJGURU COLLEGE OF
 APPLIED SCIENCES FOR WOMEN
 दिल्ली विश्वविद्यालय/University of Delhi
 सिधार्थ एनक्लेव, नई दिल्ली-110007
 Satellite Enclave, New Delhi, 110007

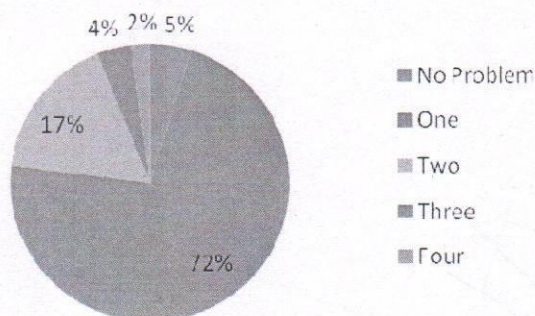
Problems encountered related to Administration



Most of the students found the administration convenient. The common problem ,as indicated is regarding bus pass form- approval and sanctioning of letters and applications.

• Feedback for Examinations and Admissions

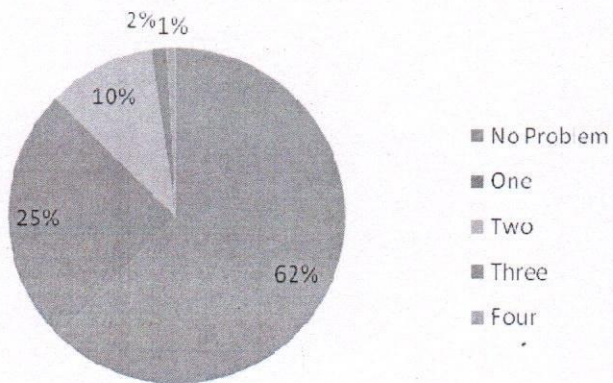
Problems encountered during examinations



The common problem that was highlighted was regarding the clearance slip.

प्राचार्य/Principal
 शाहीद राजगुरु कॉलेज ऑफ
 एप्लाइड साइंसेस फॉर वुमैन
 SHAHEED RAJGURU COLLEGE OF
 APPLIED SCIENCES FOR WOMEN
 (एन.पी. विश्वविद्यालय/University of Delhi)
 एन.पी. विश्वविद्यालय, नई दिल्ली-110096
 N.P. UNIVERSITY, New Delhi, 110096

Problems encountered during admissions



The majority did not encounter any major problems during admissions.



शहीद राजगुरु कॉलेज ऑफ एप्लाइड साइंसेस फॉर वुमैन SHAHEED RAJGURU COLLEGE OF APPLIED SCIENCES FOR WOMEN

(दिल्ली विश्वविद्यालय)

वसुंधरा एनक्लेव (चिल्ला स्पोर्ट्स कॉम्प्लेक्स के पास)

दिल्ली-110096

दूरभाष : 22623503, 22623505

दूरभाष/फैक्स : 22623504

(UNIVERSITY OF DELHI)

Vasundhara Enclave (Adjoining Chilla Sports Complex)

Delhi-110096

Phone(s) : 22623503, 22623505

Phone/Fax : 22623504

संदर्भ सं./Ref. No. SRCASW/.....

दिनांक/Date.....

Feedback 2015-2016

Student Feedback Analysis

Table 1.1 Problems faced during admission

Problems faced during admission	No. of Students
Information through various notices	39
Regarding college website	65
Regarding help desks in the college	78
Regarding payment of fee	23
No problem	507

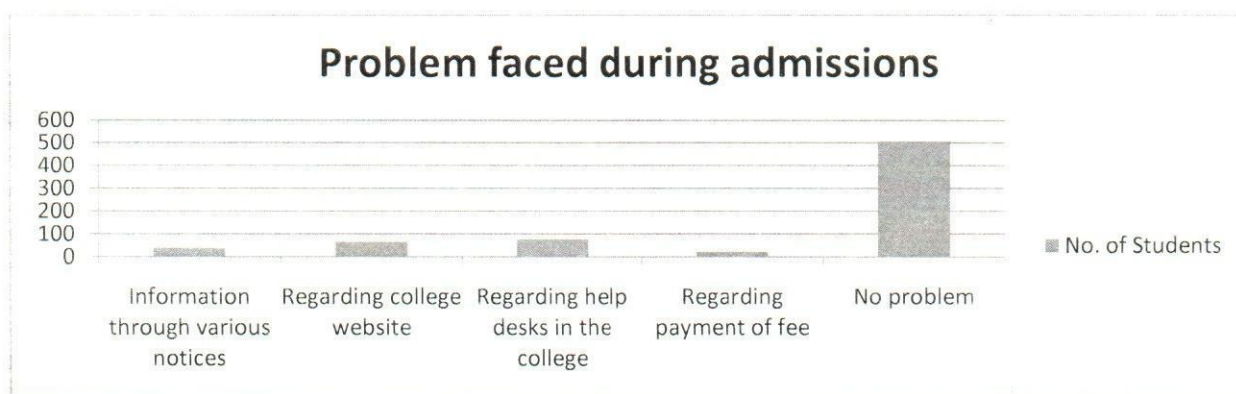


Figure: 1.1

Table 1.2: Problems faced in library

Problems in library	No. of Students
Regarding library timings	108
Regarding library books	218
Regarding issue and return of books	90
Regarding RFID system	29
Regarding Internet connection	52
multiple problems(1 to 5)	182
No problems	29

प्राचार्य/Principal
शहीद राजगुरु कॉलेज ऑफ
एप्लाइड साइंसेस फॉर वुमैन
SHAHEED RAJGURU COLLEGE OF
APPLIED SCIENCES FOR WOMEN
दिल्ली विश्वविद्यालय/University of Delhi
वसुंधरा एनक्लेव, नई दिल्ली-110096
Vasundhara Enclave, New Delhi-110096

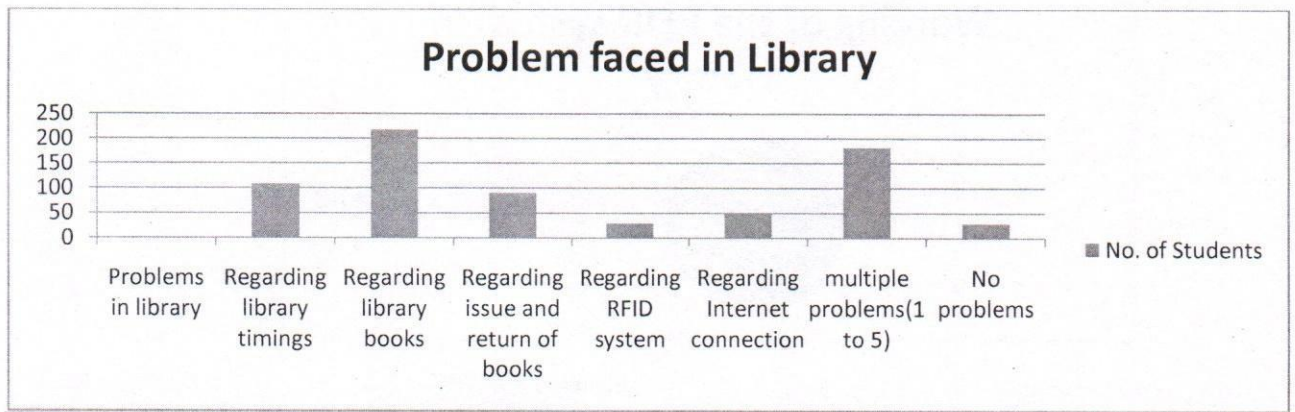


Figure: 1.2

Table 1.3: Access the relevant information from E-library

Do you know how to access the relevant information from e-library?	No. of Students
YES	308
NO	37
Partly	103
Not needed	19

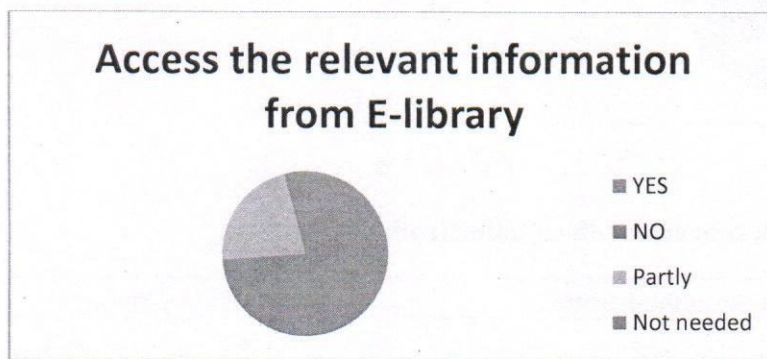



Figure: 1.3

Table 1.4: Working of the RFID system in Library

Do you know and understand the working of the RFID system installed in the library?	No. of Students
NO	65


 प्राचार्य/Principal
 शाहीद राजगुरु कॉलेज ऑफ
 एप्लाइड साइंसेस फॉर वुमैन
 SHAHEED RAJGURU COLLEGE OF
 APPLIED SCIENCES FOR WOMEN
 दिल्ली विश्वविद्यालय/University of Delhi
 बसंढपः एनक्लेव, नई दिल्ली-110096
 Enclave, New Delhi-110096

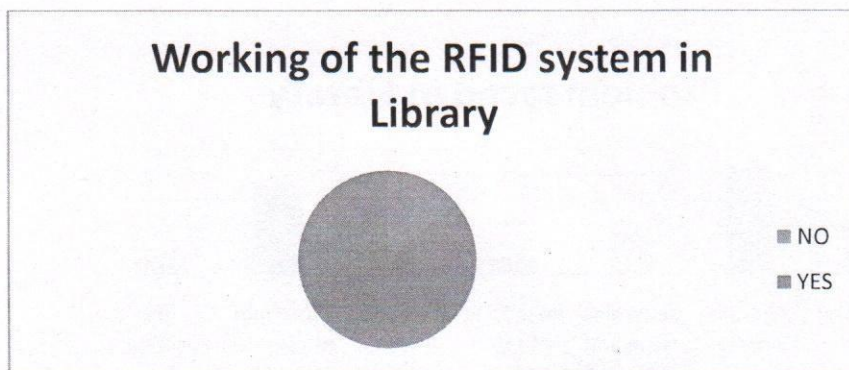


Figure: 1.4

Table 1.5: Problems faced in Teaching

Problem in teaching	No. of Students
YES	143
NO	435

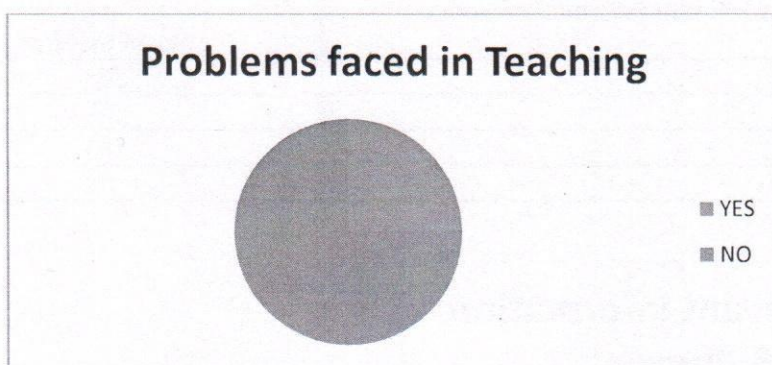


Figure: 1.5

Table 1.6: Problems you face, concerning the administration?

Problems you face, concerning the administration?	No. of Students
No problem	508
Regarding bus pass form approval	65
Regarding fee concession forms	41
Regarding sanctioning of letters and applications	67
Regarding travel concession for students	32

प्राचार्य/Principal
 शाहीद राजगुरु कॉलेज ऑफ
 एप्लाइड साइंसेस फॉर वुमैन
 SHAHEED RAJGURU COLLEGE OF
 APPLIED SCIENCES FOR WOMEN
 दिल्ली विश्वविद्यालय/University of Delhi
 सुंधार एनक्लेव, नई दिल्ली-110007
 Sundhara Enclave, New Delhi-110007

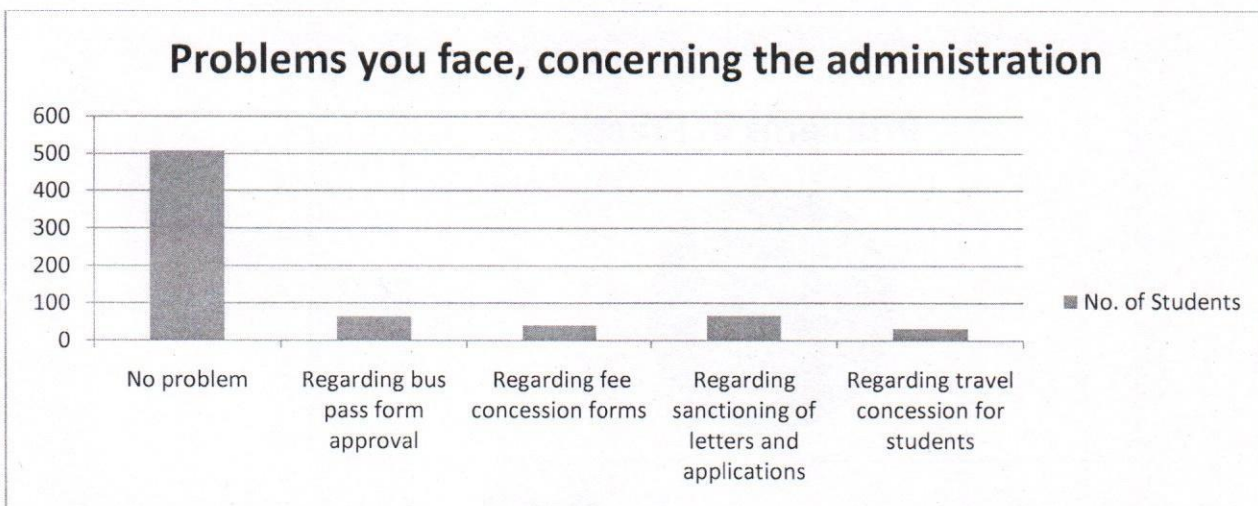


Figure: 1.6

Table 1.7: Problems faced in relation to examinations

Problems do you face in relation to examinations?	No. of Students
No problem	52
Regarding admit card, clearance slip, examination fees	144
Regarding examination fees	12
Regarding clearance slip	197
Regarding result notifications	60

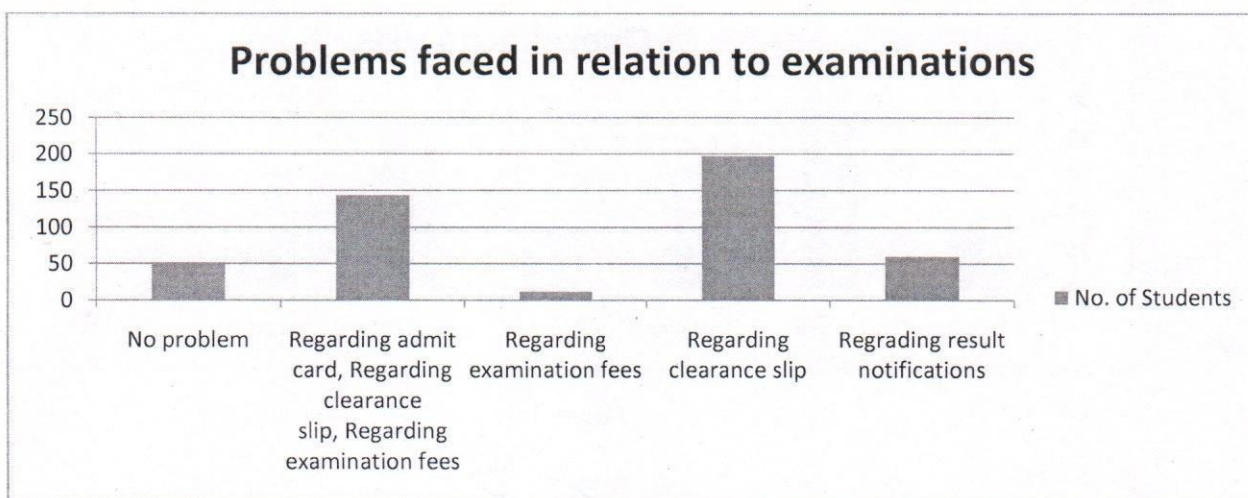



Figure: 1.7

Table 1.8: Problems in Practical

Problem in Practical	No. of Students
YES	117
NO	343


 प्राचार्य/Principal
 शाहीद राजगुरु कॉलेज ऑफ
 एप्लाइड साइंसेस फॉर वुमेन
 SHAHEED RAJGURU COLLEGE OF
 APPLIED SCIENCES FOR WOMEN
 (दिल्ली विश्वविद्यालय/University of Delhi)
 वसुंधरा एनक्लेव, नई दिल्ली-110096
 Vasundhara Enclave New Delhi-110096

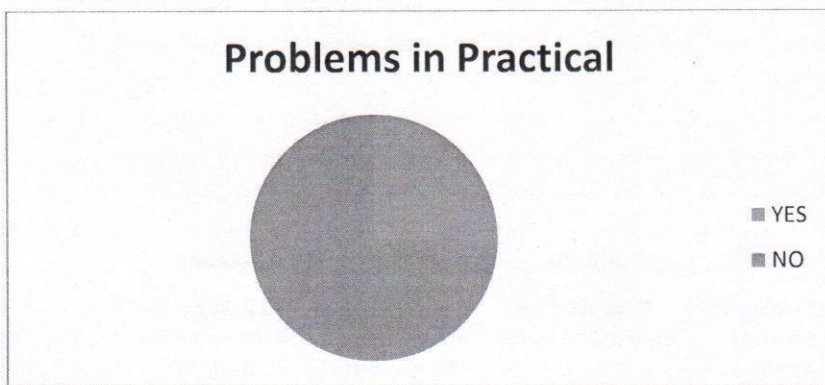


Figure: 1.8

Table 1.9: Overall Analysis

Problems Faced	Percentage of Students
Admin	28.75
Library	95
Teaching	25
Admission	29
Examination	89
Practical	25

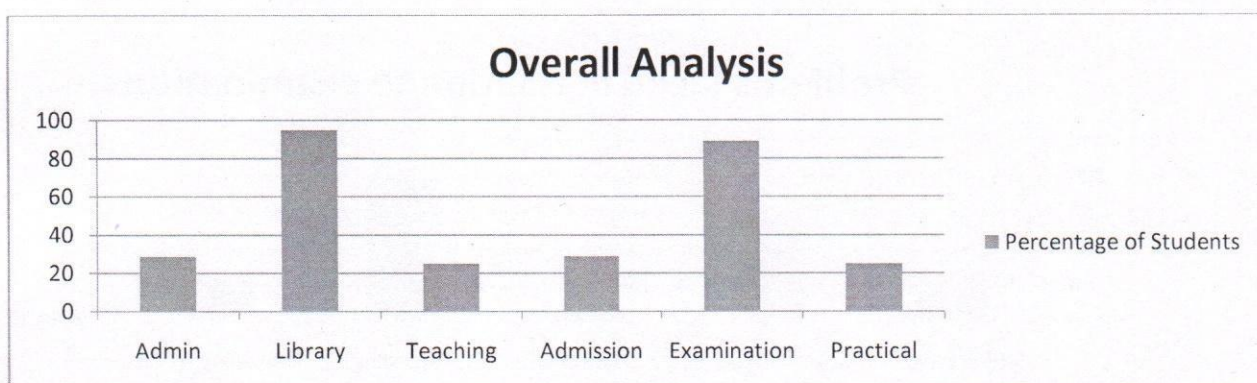


Figure: 1.9

प्राचार्य/Principal

शहीद राजगुरु कॉलेज ऑफ
एप्लाइड साइंसेस फॉर वुमैन
SHAHEED RAJGURU COLLEGE OF
APPLIED SCIENCES FOR WOMEN
दिल्ली विश्वविद्यालय/University of Delhi
वसुंधरा एनक्लेव, नई दिल्ली-110096
Vasundhara Enclave New Delhi-110096

Parent Feedback Analysis

Table 2.1: College Environment

Is the college providing a caring and conducive environment?	Parents Participated
No	27
Yes	706

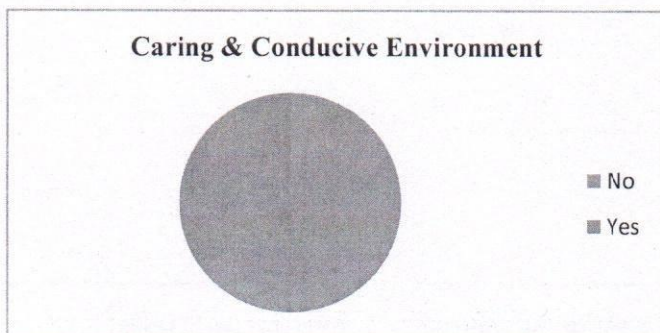


Figure: 2.1

Table 2.2: Academic Development

Is the college helping in the development of Academic Interest in the student?	Parents Participated
No	47
Yes	686

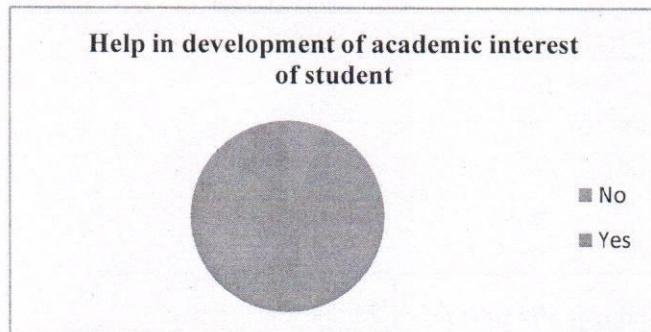



Figure: 2.2

Table 2.3: Regularity of Classes

Are the theory classes held regularly?	Parents Participated
No	19
Yes	714


 प्राचार्य/Principal
 शाहीद राजगुरु कॉलेज ऑफ
 एप्लाइड साइंसेस फॉर वूमन
 SHAHEED RAJGURU COLLEGE OF
 APPLIED SCIENCES FOR WOMEN
 (विश्वी विस्तारविद्यालय/University of Delhi)
 नर्सिंग एनक्लेव, नई दिल्ली-110006
 Nursing Enclave, New Delhi-110006

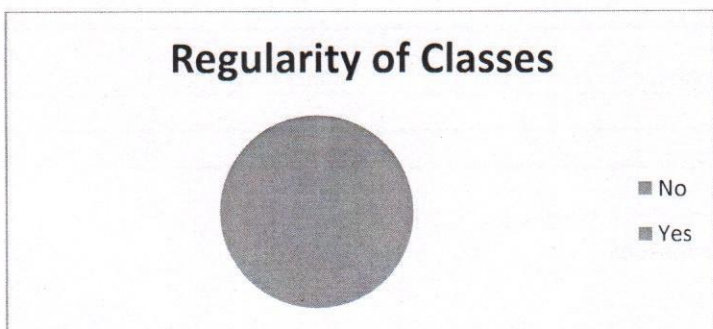


Figure: 2.3

Table 2.4: Library Facilities

Whether proper library facilities are available in the college?	Parents Participated
No	54
Yes	679

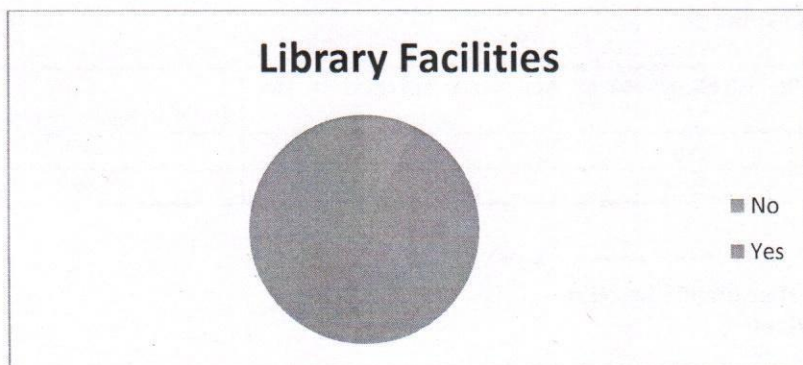


Figure: 2.4

Table 2.5: Sports Facilities

Whether enough Sport facilities are available in the college?	Parents Participated
No	281
Yes	452

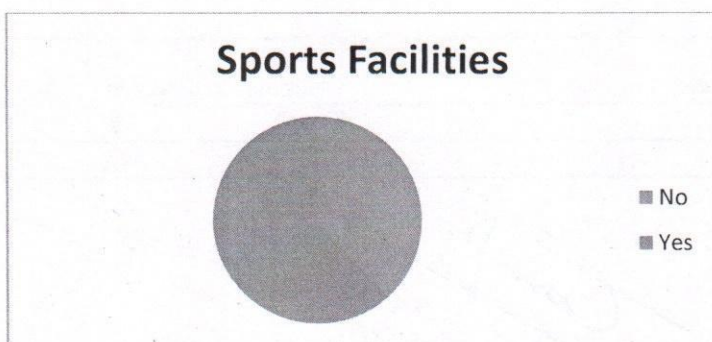


Figure 2.5

प्राचार्य/Principal
शहीद राजगुरु कॉलेज ऑफ
एप्लाइड साइंसेस फॉर वूमन
SHAHEED RAJGURU COLLEGE
APPLIED SCIENCES FOR WOMEN
निराली विश्वविद्यालय/University of Delhi
वसंधार एनक्लेव, नई दिल्ली-110096
Vasundhara Enclave New Delhi-110096

Table 2.6: College Discipline

Is the discipline in the college satisfactory?	Parents Participated
No	5
Yes	728

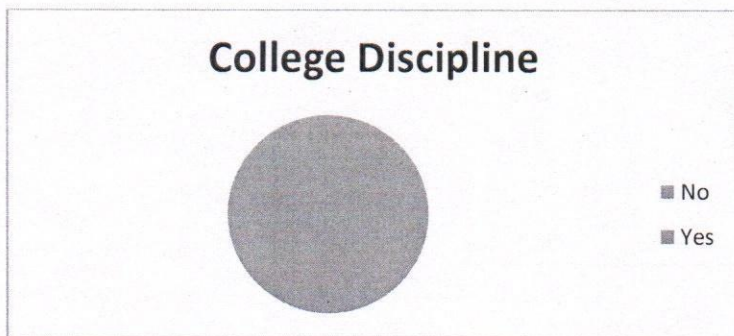


Figure: 2.6

Table 2.7: Moral Values

Is the college aiding in building moral values in your daughter?	Parents Participated
no	24
yes	709

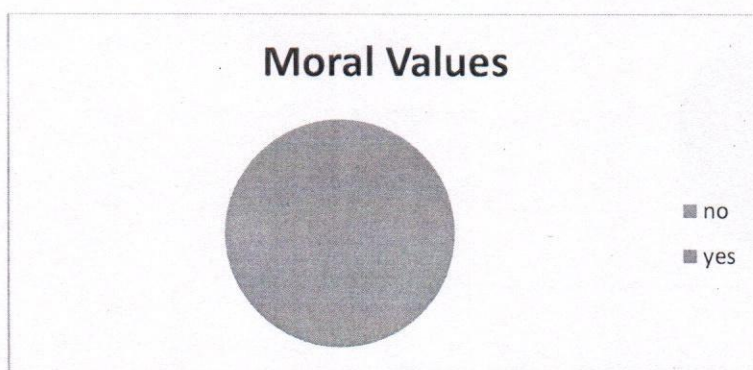


Figure: 2.7

Table 2.8: Research Orientation

Is the college helping in inculcating interest in Research?	Parents Participated
No	104
Yes	629

प्राचार्य/Principal
 शहीद राजगुरु कॉलेज ऑफ
 एप्लाइड साइंसेस फॉर वूमन
 SHAHEED RAJGURU COLLEGE OF
 APPLIED SCIENCES FOR WOMEN
 (दिल्ली विश्वविद्यालय/University of Delhi)
 वसुंधरा एनक्लेव, नई दिल्ली-110096
 Vasundhara Enclave New Delhi-110096

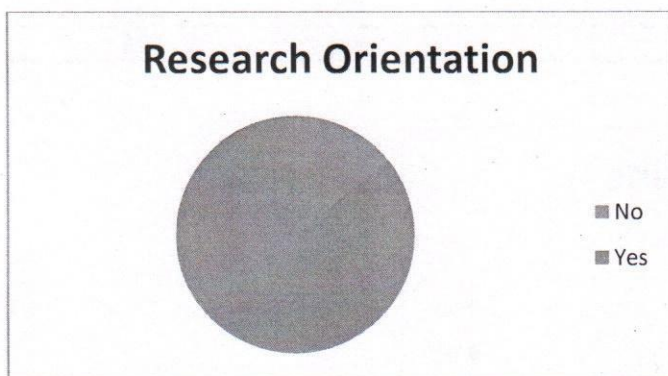


Figure: 2.8

Table 2.9: Practical classes held regularly

Are the practical classes held regularly?	Parents Participated
No	21
Yes	712

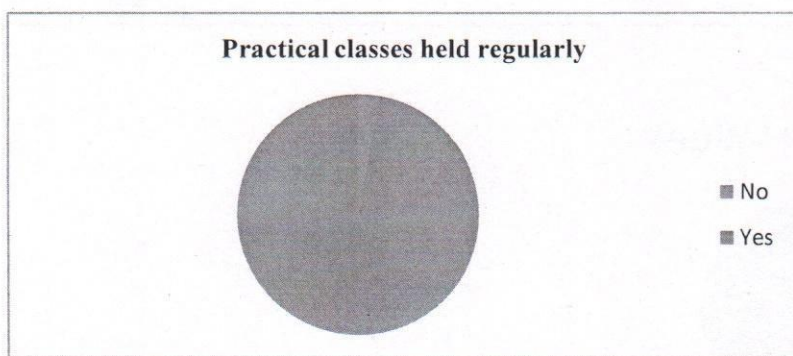


Figure: 2.9

Table 2.10: Attendance is regularly updated on college website

Are you aware that the attendance of the students is regularly updated on the college website?	Parents Participated
No	107
Yes	626

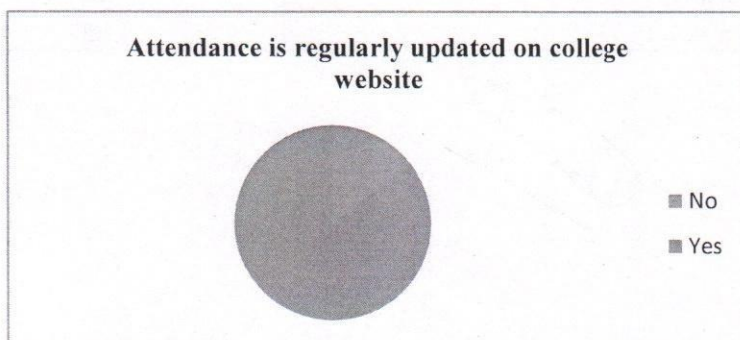


Figure: 2.10

प्राचार्य/Principal
शहीद राजगुरु कॉलेज ऑफ
एप्लाइड साइंसेस फॉर वुमैन
SHAHEED RAJGURU COLLEGE OF
APPLIED SCIENCES FOR WOMEN
(दिल्ली विश्वविद्यालय/University of Delhi)
वसुंधरा मार्ग, नई दिल्ली-110096
New Delhi-110096

Table 2.11: ECA facility provided in college

Whether enough ECA facility is provided in the college?	Parents Participated
No	118
Yes	615

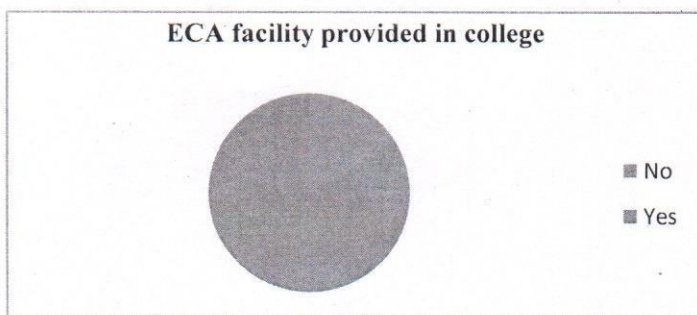


Figure: 2.11

Table 2.12: Improvements

In case, improvement is required in any of the above areas. Please specify.	Parents Participated
no improvement needed	62
no comment	618
suggestions	53

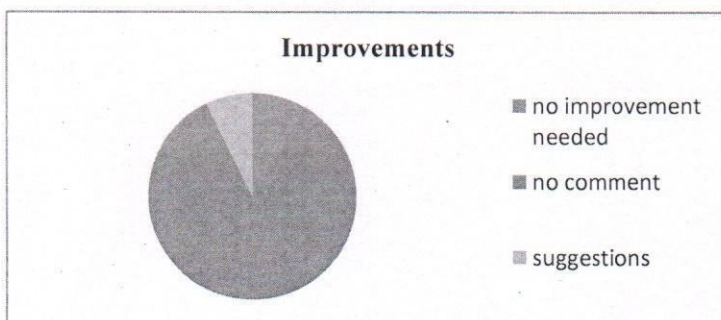


Figure: 2.12

Table 2.13: Any contribution in academic or extracurricular activities in college

Can you contribute in any of the academic or extracurricular activities of the college?	Parents Participated
No	458
Yes	275

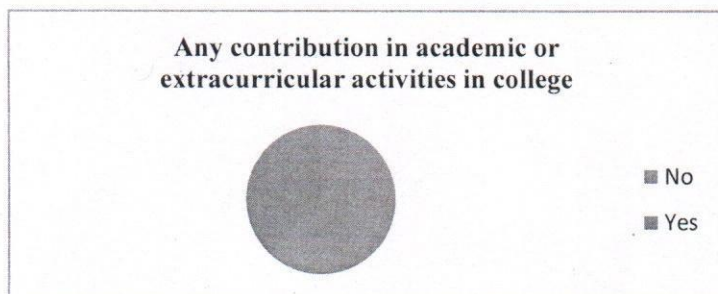


Figure: 2.13

[Signature]
 प्राचार्य/Principal
 शहीद राजगुरु कॉलेज ऑफ
 एप्लाइड साइंसेस फॉर वुमैन
 SHAHEED RAJGURU COLLEGE OF
 APPLIED SCIENCES FOR WOMEN
 दिल्ली विश्वविद्यालय/University of Delhi
 नवंबर, एन.ए.के.ए. नई दिल्ली-110007
 November, Ansari Nagar, New Delhi-110007